
BIRTH CHART

An Astro Gold Report for Meghan, Duchess of Sussex



Written by Stephanie Johnson

*Compliments of Esoteric Technologies Pty Ltd PO Box 159 Seaford
Vic 3198 www.esotech.com.au*

Meghan, Duchess of Sussex

Female

4 Aug 1981, Tue

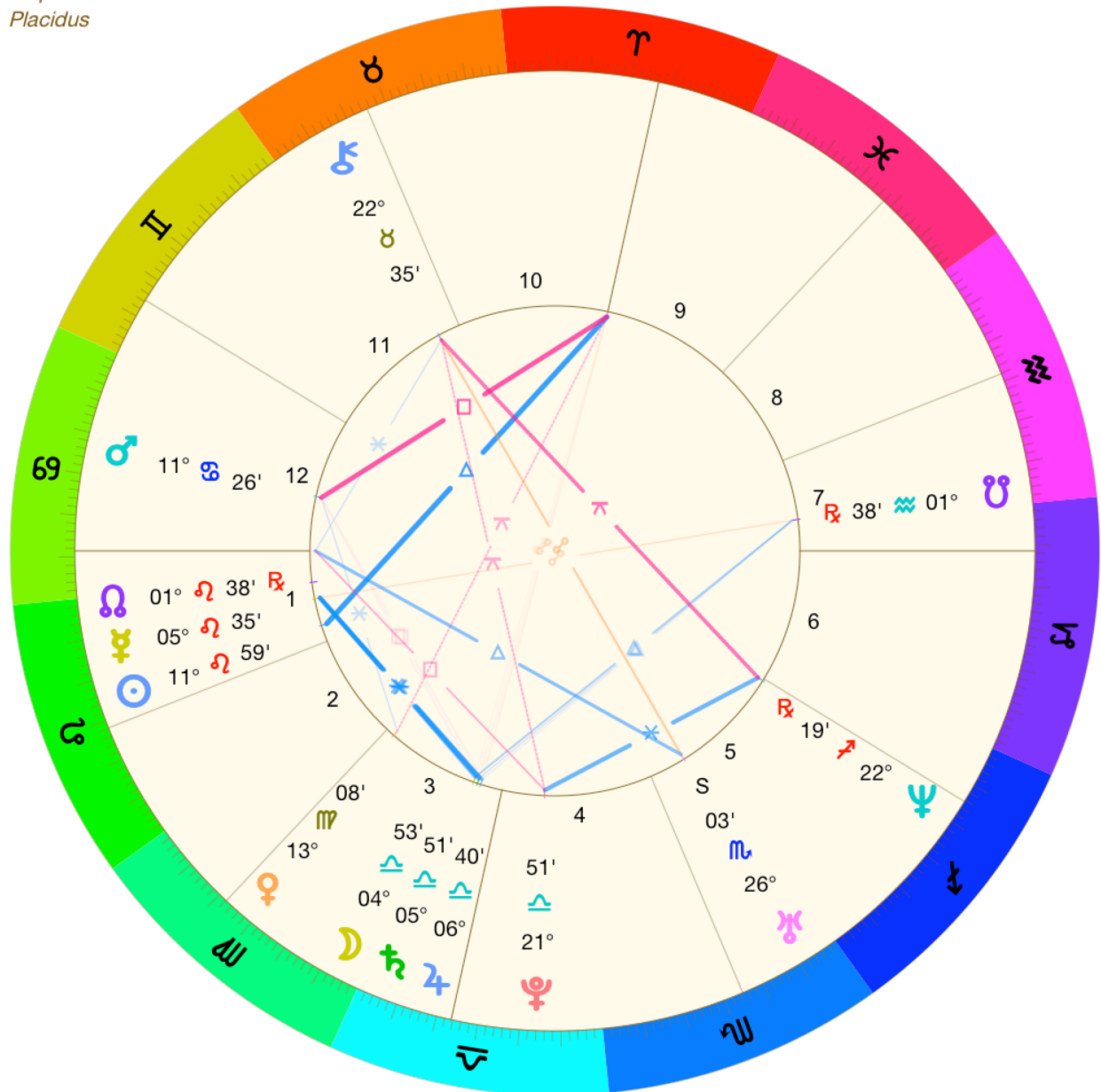
4:46 am PDT +7:00

Canoga Park, CA

Geocentric

Tropical

Placidus



Astrological Summary

Chart Point Positions: Meghan, Duchess of Sussex

Planet	Sign	Position	House	Comment
The Moon	Libra	04°Li53'	3rd	
The Sun	Leo	11°Le59'	1st	
Mercury	Leo	05°Le35'	1st	
Venus	Virgo	13°Vi08'	3rd	
Mars	Cancer	11°Cn26'	12th	
Jupiter	Libra	06°Li40'	3rd	
Saturn	Libra	05°Li51'	3rd	
Uranus	Scorpio	26°Sc03'	5th	
Neptune	Sagittarius	22°Sg19'	5th	
Pluto	Libra	21°Li51'	4th	
Chiron	Taurus	22°Ta35'	11th	
The North Node	Leo	01°Le38'	1st	
The South Node	Aquarius	01°Aq38'	7th	
The Ascendant	Cancer	24°Cn17'	1st	
The Midheaven	Aries	11°Ar48'	10th	

Chart Point Aspects: Meghan, Duchess of Sussex

Planet	Aspect	Planet	Orb	App/Sep
The Moon	Sextile	Mercury	0°41'	Applying
The Moon	Square	Mars	6°33'	Applying
The Moon	Conjunction	Jupiter	1°46'	Applying
The Moon	Conjunction	Saturn	0°57'	Applying
The Moon	Sesquisquare	Chiron	2°41'	Applying
The Moon	Trine	The South Node	3°15'	Separating
The Moon	Opposition	The Midheaven	6°54'	Separating
The Sun	Conjunction	Mercury	6°24'	Applying
The Sun	Trine	The Midheaven	0°11'	Applying
Mercury	Sextile	Jupiter	1°04'	Applying
Mercury	Sextile	Saturn	0°15'	Applying
Mercury	Sesquisquare	Neptune	1°43'	Applying
Mercury	Conjunction	The North Node	3°56'	Separating
Mercury	Opposition	The South Node	3°56'	Separating
Venus	Sextile	Mars	1°41'	Separating
Mars	Square	Jupiter	4°46'	Separating
Mars	Sesquisquare	Uranus	0°23'	Separating
Mars	Square	The Midheaven	0°21'	Separating
Jupiter	Conjunction	Saturn	0°48'	Separating
Jupiter	Sesquisquare	Chiron	0°54'	Applying

Jupiter	Trine	The South Node	5°01'	Separating
Jupiter	Opposition	The Midheaven	5°07'	Separating
Saturn	Sesquisquare	Chiron	1°43'	Applying
Saturn	Trine	The South Node	4°12'	Separating
Saturn	Opposition	The Midheaven	5°56'	Separating
Uranus	Opposition	Chiron	3°27'	Applying
Uranus	Trine	The North Node	5°35'	Applying
Uranus	Trine	The Ascendant	1°45'	Applying
Uranus	Sesquisquare	The Midheaven	0°45'	Separating
Neptune	Sextile	Pluto	0°28'	Applying
Neptune	Quincunx	Chiron	0°16'	Separating
Pluto	Quincunx	Chiron	0°44'	Separating
Pluto	Square	The Ascendant	2°26'	Separating
Chiron	Sextile	The Ascendant	1°41'	Separating
The North Node	Conjunction	The Ascendant	7°21'	Applying
The South Node	Opposition	The Ascendant	7°21'	Applying

INTRODUCTION



This report has been written to introduce you to the concepts of astrology and how to get started with your natal chart. Astrology is a complex and meaningful science which takes years to study and apply successfully; however, we would like to whet your appetite with this report, and encourage you to deepen your understanding through other means.

Astrology is a study of the connection between planets and life on earth. It is based on a concept that energy patterns form between other planets and earth; and that these energies affect our lives as individuals and communities.

An astrological chart, also known as a Horoscope, natal chart, or Birth Chart, records the relationship between the planets and the Signs of the Zodiac. Charts can be calculated for the birth of a person, a community, an event or anything that seems momentous. The Horoscope is as individual and unique as a fingerprint.

When using these interpretations, please bear in mind that, inevitably, every chart will contain some contradictory influences, and as a result certain interpretation of different items in the same chart may seem difficult to reconcile. However, this may still be an accurate reflection of your chart, as it is likely that you do experience conflicting desires, events and circumstances in your life. Usually, it is the responsibility of an astrologer to synthesise these apparent contradictions in order to present a cohesive and meaningful interpretation of the dilemmas of the chart.

Please also be aware of the fact that each person has positive and negative influences in the chart, and therefore in their lives. The challenge is to accept and overcome the negative influences, so that we can successfully focus on the positive traits. This report outlines both influences, and therefore parts may be difficult to accept. Any advice given is meant to be an aid to a person taking responsibility for their own lives. The ultimate decision rests with each individual. The author and publisher accept no liability for any adverse effects of this report.

LIFE GOALS



*If you would hit the mark, you must aim a little above it;
Every arrow that flies feels the attraction of earth.*
Longfellow, *Elegiac Verse* 1880.

The Sun

Just as the Sun is the centre of the earth's Solar System, so does the Sun play a vital role in your life on earth. Your life goals are linked to your Sun - its Zodiac Sign and its position in your chart. Contrary to popular belief, the Sun isn't the only planet to be considered in a person's chart, but it is an important component. The Sun gives you an indication of how you can shine in your life. You will feel truly alive when you're living the traits indicated by your Sun. Therefore, it's likely that you will spend much of your life on a journey to self-discovery, aiming to incorporate these traits into your life. Understanding the energy of your Sun is a good starting point to understanding yourself and your purpose in life.

The Sun is in the 1st House

Your Sun is in the 1st House of your Birth Chart meaning that self-expression is an important aspect of your life, because you believe strongly in the rights of the individual. This is because it's so important for you to have the freedom to explore your own personal interests and make your own way in the world. Some might call you arrogant and selfish; however, you're equally determined that others should also have the ability to express themselves. You learn most through your own experiences, rather than relying on the advice of others. You may not realise it, but you also make a strong impression on those around you. They see you as assertive and independent, whether you feel it or not. Of course, this does depend on other influences in your Chart. You're frank and confident, proud and independent, and can be combative if you're opposed. You like to take the initiative and have the ability to focus on your own goals and methods of doing things, rather than adhering to popular opinion. For these reasons you're likely to be thrust into leadership roles, giving you the opportunity to fully express yourself.

The Sun in the 1st House means that the Sun is Rising as you are born. In ancient times the Sun was considered particularly strong when in the angular 1st House of a Chart, highlighting your ability to live a hale and hearty life with plenty of energy to ensure that you make an impact on your environment. It is seen as a good omen and means that you're likely to succeed in your ambitions, and perhaps in rising above your station in life. The more self-motivated that you can be leads to the more individual success that you can achieve.

The Sun is in Leo

Your Sun is in the Zodiac Sign of Leo indicating that you're good-hearted, and have a

sunny personality which shines in the company of others. In fact, you love an audience, basking in the attention which comes with being centre stage. This does not necessarily mean that you want a public audience. Perhaps other influences in your Birth Chart indicated a more private personality, however; you do want to be the leading lady or man in your own life. Most of the time you do manage to attract the attention that you so keenly seek, as your enthusiasm and sense of fun has a contagious effect lighting a spark of fun and joy in those around you. Your generous nature also means that you're willing to share your abundant goodwill with others. You may also find yourself surrounded by children ready to join your playful games, for you're adept at bringing out the child in everyone. You're quick to admire the achievements of others and yet also expect others to admire your feats. It is here that you need to watch your step. There is always the chance that you will go over the top in your expectations, focussing excessively on yourself to the exclusion of others. Other people may not always be so keen to step aside and let you take centre stage. This can lead to some fiery exchanges in which you're forced to learn the lesson of humility. This is an important lesson, which if avoided can result in you hiding behind your pride. "Pride comes before a fall" could be a timely reminder. However, astrologically the Sun is said to be in its own rulership in Leo, emphasising the positive aspects of this placement. So on the whole your irrepressible sunny nature is close to the surface ready to delight another audience and radiate warmth to all who come in contact with you.

Sun is Conjunct Mercury

What a lively mind you have! This combination means that you're curious, keen to learn new tricks and meet new people whenever possible. People are drawn to your interest and willingness to join in on any new activity. What a blessing you are when your friends and family ask you to join in. You are likely to succeed in life through your quick wit and business acumen. You have strong opinions and are likely to be an independent thinker. You can be relied on to give your opinion if others ask for advice. You're studious, learning new subjects with ease, and are particularly adept in the scientific and mathematical fields. If the intellect is not your forte, then hand and eye co-ordination is likely to be. You are a great juggler, either literally or with the ability to multi-task. You need to be wary of seeking stimulation at all costs, with the end result meaning that you fail to complete a task. You could be the proverbial "Jack or Jill of all trades, master/mistress of none". However, if you develop your ability to make choices and master some skills then you are dexterous and able to achieve whatever you set your mind to.

Jupiter

The planet Jupiter tells you about your goals in life, in particular the areas in which you are likely to succeed. Jupiter is the planet of expansion, abundance and wisdom. Ancient astrologers called Jupiter "the Great Benefic" and believed that it bestowed riches and rewards on individuals. This planet was associated with Kings, Lords and others in high places.

Jupiter is associated with being plentiful and benevolent. It is tolerant and expansive. The first of the social planets, Jupiter seeks insight through knowledge. This is the planet of exploration through study, travel or higher learning. It is the getting of wisdom.

Jupiter is in the 3rd House

Jupiter is in the 3rd House of your chart signifying that ideas, particularly philosophical ones, abound in your life as you seek to expand your mind through various avenues. Reading, studying, travelling, correspondence courses, newsletters and interest groups all feature in your quest to learn more about yourself and life in general. You're surrounded by books, magazines and other publications that provide plenty of food for thought. You're a great thinker and talker, often delighting yourself and your friends

with your inspirational ideas. Always optimistic you enjoy communicating with other people either through conversation or correspondence. You're a thoughtful person, and letter writing, emailing and texting are just some of the ways that you like to keep in touch with your friends. How you manage to fit it in to your busy schedule continues to amaze your friends. Writing is such an enjoyable pastime that you may decide to extend your talents and write a novel or a professional publication. If so then you're likely to be successful in finding a publisher. While you enjoy your local neighbourhood, it's also likely that you delight in travelling abroad either to study or to teach. You take pleasure in having contact with people from different countries, sharing ideas and striking up new friendships.

Jupiter is in Libra

You've the planet Jupiter in the Zodiac Sign of Libra in your Birth Chart indicating that you are a mild and temperate person who has a strong concern for justice. You're a born diplomat, and your concern for justice could be reflected in your choice of lifestyle or profession. Mostly you're obliging and sociable, fond of pleasure, particularly the joys of cultured entertainment or of travel abroad. However, other people would be wrong if they mistook your mild manner for meekness. You know the benefits of tackling tricky situations with diplomacy rather than aggression. Your skills in this area are formidable, and you can go a long way towards achieving your goals of justice and peaceful relationships. You're conscientious and compassionate. Social occasions are also a feature of your life, providing you with much pleasure. You enjoy being surrounded by your friends in pleasant surroundings. You're also likely to benefit through your relationships with other people, and are likely to form a happy primary relationship.

Jupiter is Conjunct Saturn

The planets Jupiter and Saturn are making a beneficial aspect in your Birth Chart indicating success in achieving your life goals. You're wise and perceptive, with a talent for creative ideas and the ability to put those ideas into action. You're blessed with a wonderful sense of timing, knowing exactly when to make the right moves to achieve a desired result, whether it be for yourself or for a group project. You've just the right blend of optimism and realism. For these reasons you can enjoy success in self-employment or be a valued member of a team. Whether you're self-employed or not, you work well within a structured system and therefore can do well in business. It's likely that both conventional and unorthodox approaches to life appeal, as you understand the advantages in learning from tradition, as well as the benefits of trying new ideas. You've a chance to be very successful as you're neither profligate nor mean, but have a balance. This is a very fortunate aspect. If you don't take your abilities for granted but use them wisely you can gain great success in life.

HOME



*Perverse and foolish oft I strayed,
But yet in love he sought me,
And on his shoulder gently laid,
And home, rejoicing, brought me.*
Hymn, *The King of love my Shepherd* is 1868.

The Moon

Modern day astrology has popularised the Sun. Many people know their Sun Sign and identify with its attributes. In ancient times the Moon took precedence. And certainly, Chinese astrologers place a strong emphasis on the Moon.

Astrologers from different schools of thought allocate varying meanings to the Moon in a Birth Chart. Ancient astrologers say that the Moon changes its nature according to its phases, and merely passes on impressions from other planets rather than directly influencing a person's life. However, modern astrologers tell us that the Moon depicts a person's roots, our home and family. They say the Moon also shows our habitual nature or subconscious patterns of behaviour which stand in the way of achieving our life goals. While the Moon can show us our strengths, it can also depict our weaknesses which need to be overcome in order to be successful in life.

Suffice it to say, the Moon is the seat of our emotions, whether these change or stay the same. The Moon tells us much about our basic responses or reactions through our feelings. And feelings are one of the primary, if not the primary, way in which we connect with those around us, and the environment.

The Moon is in the 3rd House

The Moon is placed in the 3rd House of your Birth Chart suggesting that you've a strong need to communicate with other people and to keep up with all of the latest news. It doesn't matter if it's the latest gossip about a celebrity or a complex and challenging subject. You have an inquisitive mind and your main aim is to keep up with all that is going on and to expose yourself to new ideas and subjects. You also have a retentive memory and the ability to converse on just about any topic, pulling bits and pieces of information from the recesses of your mind. You also like to express your own ideas to as many people as possible – the more the merrier. The ancient astrologers considered the Moon rejoiced in the 3rd House, which was also considered to be the home of the Goddess. Therefore, you are likely to enjoy an irreverent attitude to life. This could be through rebellion, speaking out for causes that stir your emotions or perhaps a wicked sense of fun. Your sense of humour can help you, and others, through many a tricky situation. With this placement of the Moon, you may enjoy acting, writing, singing, comedy, or public speaking. It is important that you express yourself, whether in your private or public life. This is your life and you need to your voice. Short journeys and changes of environment also appeal giving you more

food for thought and satisfying your curiosity. In some cases, your thirst for new and stimulating activities may result in unfinished accomplishments, because you simply can't keep up with everything in your life. Peace of mind may not come easily to you, because you always seem to have so much on your mind. Relatives may be a help or a hindrance in this respect, depending on how emotionally charged your family dynamics tend to be. Nevertheless, your need for communication, storytelling and connecting with your loved ones is likely to see you right.

The Moon is in Libra

With the Moon in the sign of Libra you love and appreciate beauty, and would prefer to share this appreciation with your loved ones. Not for you sitting alone on a hillside watching the hues of the sunset. You want your loved one close by your side. This enjoyment of others' company plays a major role in your life, and you may have some difficulty spending time on your own. However, you'll find that you've a good understanding of relationships and what makes them work, and what makes them fail. You also have an innate ability to please others, to create harmony, and to enjoy social occasions. You may find that you enjoy organising social functions. You're a people-watcher, enjoying noticing what makes them tick. You need to remember though that spending time by yourself and doing things for yourself is important. For you're likely to have creative talents which need developing. This could range from literally artistic talents, to the ability to create beautiful surroundings such as interior decorating or flower arranging.

Moon is Conjunct Jupiter

The Moon is making a positive aspect to the beneficial planet Jupiter in your Birth Chart suggesting that you enjoy your home and family life. This is a favourable aspect for health, wealth and family life. Depending on other influences in your Birth Chart you're likely to enjoy good fortune with your home, and any property investments. It's possible that you've a large family, enjoying connections with close and extended family members. You've a generous and expansive nature and an easy-going, philosophical approach to life. This makes your home a very hospitable environment. You enjoy catering for friends and family in your home, and may live in a large home or in spacious surroundings. Your optimistic view on life means that you're usually rewarded with many visitors. Family relationships are favourable, particularly with the women. It's likely that your good fortune has been influenced by your positive relationship with your mother, or an important female member of your family. You have fond memories of a warm and loving mother and want to share your good fortune with others. Perhaps there's a benevolent matriarch in the family tree. In some cases it's possible that your childhood relationship with your mother wasn't a positive experience. In this case you may be determined, as an adult, to be everything that your mother wasn't. Either way you are likely to benefit through your relationships with family members. You may also benefit through shared religious or spiritual beliefs.

Moon is Conjunct Saturn

Much of your adult life has been spent trying to overcome the difficulties that you faced as a child in your home and family. Astrologically speaking this is because the planet Saturn is contacting the Moon in your Birth Chart. Ancient astrologers believed that the planet Saturn had a negative influence in a person's chart. In your case your early home life has been adversely affected. The extent of this effect depends largely on other influences in your chart. In some cases it can mean that your childhood home lacked spontaneity and warmth, but was well-organised and structured in a manner which helped you to feel supported and safe. However, it's more likely that circumstances in your family led to you feeling that home was a cold and unsupportive environment. This could have been one painful incident such as the loss of a family member, or it could have been the result of years of hardship. It's possible that one of

your parents, perhaps your mother, was a strict and severe influence, unable to show you the affection that you felt you deserved. As a result it's likely that you're somewhat shy as an adult, lacking in self-confidence and sensitive to criticism. You may be emotionally reserved. Perhaps you decide to live in solitude rather than risk the lack of affection and warmth that you felt as a child. As you grow older, you're likely to become more confident in your personal relationships. You learn about personal relationships through life experience, and your loved ones also become more mature. As a result your relationships with other people become more stable and satisfying as you grow older. You also develop an inner self-confidence which helps you build firm foundations in your life and achieve your ambitions, as well as loving family relationships. You work solidly to build yourself a secure and firm footing, earning the respect of those around you. You can succeed in business and in your career, particularly through being noticed by your superiors. You may also benefit through investments in land and property.

Moon is Square Mars

The Moon is making a difficult aspect to the planet Mars in your chart indicating that arguments and emotional disputes abound in your home life. These upsets could be caused by another member of your family, but it's more likely that you're quick-tempered and intolerant around your loved ones. Your intentions are good, but you've difficulty containing your anger in certain situations. At times you feel as though you've been unfairly misjudged and this adds fuel to your already well-lit fire. Unfortunately your impatience and irritability can result in periods of loneliness because others would rather leave you alone than bear the brunt of your bad moods. You may also find that your loved ones are angry at your attitude or it could be that they simply find it impossible to relax in your company, which is a problem if they want peace and quiet at home. You need to find an outlet for your nervous tension. For instance, letting off steam in sports or activities that demand high energy or concentration will help. Finding an absorbing project which can be based in your home could also prove beneficial. You certainly have plenty of energy and this could be directed into new enterprises or working around the house.

Moon is Opposite Midheaven

Most people are influenced by their home and family, however, you are particularly sensitive to the ebb and flow of family life. As a young child you enjoy spending time in your home, relating to those who share your household as well as extended family members. If you grow up in a warm and supportive family environment then you are likely to enjoy an equally happy household as an adult. If you suffer at the hands of your family then your journey may be rockier. At some stage you are likely to break away, determined to create a sense of security in your own home. You may start a family of your own with the view of developing a warm and safe household. Safety and security at home are vital factors for your health and happiness. You need a safe haven. Your home does not necessarily need to be a large mansion, but you do need to feel comfortable. You are likely to be a force to be reckoned with in your family life. Other family members may come and go, but you are the one likely to be a guiding hand and a comfort for family members. You may be the keeper of family memories with photographic displays, books, and stories to tell. The family history fascinates you, perhaps even compelling you to research and record facts and stories. Once you feel settled in your family life and home, then you are able to make your way in the world, choose your career path. However, family life is likely to continue to be a priority.

Jupiter is Opposite Midheaven

The planet of Kings is in a significant position in your Birth Chart, suggesting that the Gods are smiling on your home and family. These are two areas of your life that provide much satisfaction and pleasure. You put a lot of time and effort into your

home, making sure that everything runs smoothly and that all is comfortable and attractive. Home decoration may be something for which you've a special talent. You may express this in your private life by decorating your own home, or perhaps choose a profession that helps you express this talent. It's likely that your home or property is large and expansive, providing you with a sense of well being. If not then perhaps you live in a wide-open space or near the ocean. You like to be able to escape the petty details of daily life by relaxing in or around your home. Whether your home is large or not, there's a sense of expansiveness which can be enjoyed by all. It's not only the building, which is important, but also your loved ones. You like to know that they are comfortable and well cared for. Your immediate family may be quite large, or perhaps you have a large extended family. Depending on other aspects of your Birth Chart, you're likely to gain property through investment or inheritances. Ancient astrologers believe that the planet Jupiter has a beneficial effect in a person's Birth Chart. They also believe that it's in a favourable position in the angular fourth house. This means that you're likely to be successful in achieving your goals and live to a comfortable old age.

Saturn is Opposite Midheaven

The serious planet Saturn is in a significant position in your Birth Chart suggesting that family responsibilities need to be attended to before you can succeed in the public world. This can mean that some serious childhood matters need to be faced and dealt with before you can move forward on your own life's journey. Perhaps these matters are connected to your father, or your father's family. Your early family life may not have been as supportive as you would have liked, resulting in you feeling a lack of a firm footing. In some cases it could be that your family life was generally secure but that your parents moved house, forcing you to begin again in a new environment and creating a sense of insecurity. While some children adapt well to new homes and neighbourhoods, you had difficulty coping with the changes. As you grow and mature you find that you've to come to terms with these early difficulties. Gradually you learn how to build up a solid foundation that suits you and your home life becomes a solid base for you and you are ready to branch out and secure a future through your profession, or through marriage and a family of your own. The ancient prophets believed that this was a highly significant placement for the planet Saturn and therefore you are likely to have learnt some valuable lessons. Perhaps you realise that there is no point in holding on to the past but rather to focus on the foundations of the present moment.

EDUCATION AND COMMUNICATION



*There is no such whetstone, to sharpen a good wit
and encourage a will to learning, as is praise.
Roger Ascham, *The Schoolmaster* 1570.*

Mercury

Our academic schooling and learning through life experience are linked to the planet Mercury. This planet stands for the intellect, common sense, cold reason, commerce and business. It tells us about our communication and learning habits and our modes of thinking.

Mercury is in the 1st House

The planet Mercury in the 1st House of your chart signifies that, possessing a lively and enquiring mind, you are constantly seeking information and data about the world around you. You are curious, wanting to discover new things about the world, and this can take you to some very interesting places, both in your local neighbourhood and further abroad. "Curiosity killed the cat" is the old saying. However, you would be quick to add the often forgotten ending to the saying, "satisfaction brought him back"! You've a keen intellect and don't like to be bored, otherwise you can feel quite restless. You are fond of books, whether they be considered true literature or just a fun-filled novel. Resource books and cross-word puzzles also hold a strong appeal. You also enjoy studying new subjects, and may have literary talents. While other people may enjoy a quiet and unchanging routine, you prefer the stimulation of changing circumstances. You are resourceful and adaptable. These abilities can also stand you in good stead in the business world, where adaptability and resourcefulness can equate business acumen.

Mercury is in Leo

The planet Mercury in the Zodiac Sign of Leo indicates that you're enthusiastic in your quest for knowledge, and generous in sharing all that you've learnt even though it's sometimes to a somewhat reluctant audience. Mostly others enjoy listening to your creative story-telling talents, and find themselves enthralled by your lively communication. You may even find yourself on the stage during some time in your life. You do like the sound of our own voice. And why not? You're proud of your learning abilities, and believe in the saying that learning is fun. Your enthusiasm can be contagious. You can be creative in your thought process, and have an appreciation of the arts. You can also enjoy conversing with children. While it's true that you're an enthusiastic communicator, it's also true that your mind often turns to thoughts of your own ambitions. You're confident in your ability to communicate with others, and know that this trait could push you into a leadership role. As long as you keep your tendency to be a know-it-all under check, then you should succeed.

Mercury is Sextile Moon

The planet Mercury is associated with the Moon in your chart indicating you've a quick wit, and a sharp and penetrating mind. Depending on other influences in your chart, you're likely to excel in any studies, but particularly in communications, media studies, research, and languages. You may also be adept at public speaking, because of your sharp mind, and your clear elocution.

Mercury is Sextile Jupiter

The planets Mercury and Jupiter are making positive contact in your Birth Chart indicating that you enjoy success in your education and communications with other people. Depending on other influences in your chart, you've the ability to think clearly and deeply, combining common sense with a cheerful outlook on life. These attributes can be put to good use in your studies, and you may choose to pursue an academic education. It's also possible that you prefer to learn through your own experiences. Either way you've a thirst for knowledge and delight in sharing your discoveries with other people. You've the ability to talk to people from all walks of life, and your ideas can be uplifting for other people. Others seem to find your candid and honest manner refreshing. For these reasons you may spend part of your life teaching, writing, lecturing or public speaking. You've big ideas and plans, and the ability to achieve many of your hopes and dreams.

Mercury is Sextile Saturn

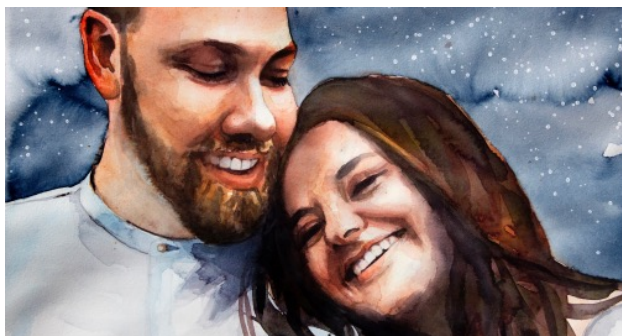
The planet Mercury is making contact with the planet Saturn in your Birth Chart indicating that you've good intellectual abilities. Your mind is contemplative and profound, capable of concentration and comprehension. Therefore, you're likely to shine in pursuits such as study, writing, publishing, lecturing, teaching, travelling, diplomacy, and business. You may be particularly interested in science, politics or medicine. You're fortunate to have good judgement and reasoning powers, as well as an excellent memory. You may have had difficulty expressing yourself as a child, but as an adult you're able to speak your mind in a logical and methodical manner. The saying "older and wiser" certainly applies in your case. You're a sensible person, able to make careful plans and carry them through to completion. Depending on other aspects in your chart you're more likely to take a traditional path in your education, rather than explore uncharted territory. The steady approach to education and communication suits you. You've the ability to become a voice of authority in your field of expertise, particularly a field which requires business acumen, good communication skills and common sense. In other words, you're capable of achieving whatever you set your mind to.

Mercury is Sesquisquare Neptune

The planets Mercury and Neptune are forming a difficult pattern in your chart suggesting that your mind is sometimes confused causing you to suffer setbacks and delays in your education and communication with other people. At times you're vague, lacking concentration and resolution. It's possible that you've spent many hours day-dreaming, lost in a world of thoughts and ideas which seem to have amounted to very little. This is partly because you lack the ability to make decisions, doubting your own abilities and relying too heavily on the influence of other people. It could also be a result of your lack of self-control. On a positive note other influences in your chart, or the development of self-discipline, can help you achieve your dreams. If this is the case then you're likely to express your thoughts in an artistic or creative manner. This could be through art, poetry, literature, story-telling, or music. It's possible that you possess genius in one of these fields. You're also likely to excel in medical or spiritual circles, where your heightened sensitivity to other people can be truly appreciated. You're more likely to follow an unconventional, rather than orthodox, path if you become involved in medicine. This is because you're attracted in psychic and spiritual phenomena. In fact you may possess psychic gifts. You may also enjoy reflective

periods near the water, or with nature.

RELATIONSHIPS



*Let me not to the marriage of true minds
Admit impediments. Love isn't love
Which alters when it alteration finds.
Shakespeare Sonnet 116.*

Venus

The planet Venus tells us about love and relationships. It reveals the type of relationship we value, and what we are seeking from our most intimate relationship, as well as how we like to show our love. It answers questions such as, are we attracted to strong, sensual and intense relationships? Or do we prefer some freedom and independence? This planet also depicts how we like to relate to our environment and other people, not just our primary partner, and how much importance we place on money and resources.

Venus is in the 3rd House

When the planet Venus is placed in the 3rd House of your Birth Chart communication is an important component of any relationship. You're bright and optimistic enjoying pleasant interchanges with other people in general, and with your siblings and relatives specifically. Your relationship with your siblings is likely to play a major role in your life. You like to fill your mind with pleasant thoughts rather than dwelling on negative and disturbing ones. Therefore you enjoy social outings in pleasant company, quiet moments with nature, attending the cinema or theatre, or reading an entertaining light novel. The arts such as theatre, opera, music, ballet, sculpture or art probably appeal to your refined mind. You also find joy through travelling, whether it be a short day trip or a longer tour or cruise. You're the type of person who enjoys sight-seeing, chatting to fellow travellers and sending postcards home to loved ones. You're a good correspondent, taking great pleasure in writing and receiving letters, particularly on special occasions. You may even enjoy writing a novel or a factual book through which you earn royalties. When not travelling you also enjoy your own neighbourhood, and striking up convivial relationships with neighbours, and local shop owners. Depending on other influences in your Birth Chart you're likely to enjoy harmonious and beneficial relationships with your siblings, in particular your sisters.

Venus is in Virgo

With Venus in the Sign of Virgo you'll seek meaningful relationships with a practical basis. You may appear to be timid and shy to others, but you're simply wary, weighing up the pros and cons before entering into intimate friendships or a meaningful relationship. You approach your primary relationship with caution, preferring to take things slowly so that you can build a lasting relationship based on real principles rather than romantic illusion. It's not that you don't enjoy a little romance. It's simply that you prefer to know that a relationship is going to last in the long term. For these

reasons you may suffer some disappointments in love, as others are discouraged by your reticence, failing to recognise the depths of your affection. You admire neatness and punctuality, preferring someone who is hard-working and healthy living like yourself. You enjoy someone who can converse on sensible subjects, perhaps even with an analytical mind. You need to be wary of being too judgmental, expecting perfection where it can't possibly exist.

Venus is Sextile Mars

The planets Venus and Mars are combining in your chart indicating that you seek a stimulating and romantic relationship. You're charming and assertive, passionate and alive, and admire these qualities in a potential intimate partner. You love to share your adventures with your partner, and it's likely that your relationship will inspire both you and your partner to explore new territory. You need only be wary of holding unrealistically high expectations of your partner, as this can lead to difficulties. This is more likely to be the case when you're young and idealistic. You're liable to disappointment, perhaps even angry feelings, when your partner fails to live up to your expectations. You could also feel angry if rejected in love. Fortunately you've an irrepressible side to your nature, on which you can rely in times of relationship trouble. You're a loyal and fun-loving partner with an ability to balance intimacy with independence.

MOTIVATION



*Dimidium facti qui coepit habet: sapere aude.
To have begun is half the job: be bold and be sensible.
Horace, Epistles 65- 68BC.*

Mars

Mars is the planet that tells us about our assertion and drive. It tells us what motivates us and what desires drive us most powerfully. Are we ambitious for professional power, or do we desire a meaningful relationship? Do we pursue our desires aggressively? Or do we sit back, lacking the confidence to achieve our ambitions? These are the types of questions answered by the qualities of the planet Mars in our chart.

Mars is in the 12th House

With Mars placed in the 12th House of your Birth Chart at times you're uncertain of the future, with vague fears of danger or treachery. If you voice these fears, then others may feel that you are suffering from paranoia. However, it's true that you can suffer at the hands of secret enemies and that you would do well to avoid dangerous situations. This placement of the planet Mars in your Birth Chart does indicate that danger and treachery can feature in your life. It can also mean loss of reputation. However, these can be avoided. You need to live your life with the utmost integrity, avoiding all criminal elements of society. You also need to learn to follow your instincts, seeking seclusion when necessary and directing your energies into secret arts or meditation. You may also be called on to make sacrifices for other people at some stage during your life. This could mean directing your energies into looking after other people, in particular your spouse who could suffer from an illness.

Mars is in Cancer

The planet Mars in the Sign of Cancer indicates that you have powerful emotions which can be used to protect and nurture your loved ones close to home, or to fight for a cause further afield. You're not afraid to use your strength to battle against injustice on other people's behalf. You can also be very protective of small or defenceless animals. You can move mountains when your powerful emotions are channelled into a positive cause; however, you need to be wary of misdirecting your energy and becoming vengeful. You're so vehemently opposed to injustice that you can nurse ill-feelings towards those you consider to be the perpetrators of wrong-doing. This can result in outbursts of temper or plans for revenge. Although you're assertive, even aggressive, when it comes to protecting the feelings and rights of others, you're likely to retreat into your shell when personally hurt. You find it much more difficult to stand up for your own personal rights than you do for others. Astrologically the planet Mars is considered to be in a difficult position in the Sign of Cancer meaning that you could have some difficulties directing your energies into positive pursuits.

Mars is Square Jupiter

The planets Mars and Jupiter are combining in your chart indicating that when you are young your hasty judgement can sometimes land you in hot water. You've plenty of motivation to achieve your goals, but lack proper judgement and discernment so that you miscalculate the amount of time and energy needed. As a young person you need to be less careless and impulsive, which can sometimes result in accidents which are a result of you rushing around and trying to achieve too much. The motto "you're your own worst enemy" could be one for you to reflect upon. Depending on other aspects in your chart you're also excessive in your generosity. As you mature you need to develop self-discipline. Otherwise your impulsiveness may be an impediment to reaching your goals. As you learn to balance your excess energy you can achieve much. You're a lively and resourceful person, who delights in good health and keeping busy. Any course of action is entered into with confidence and determination to succeed, which you're likely to do despite the obstacles. You certainly know how to get yourself and other people motivated, and can make a good leader or manager. You may be particularly keen to travel, enjoying the stimulation of visiting other venues. You could direct your energy to achievement in sports, politics or travel. Once you have learnt to manage your resources you can achieve many of your goals.

Mars is Sesquisquare Uranus

The unfavourable combination of the planets Mars and Uranus suggests that you're often restless and unsettled in your life. On the one hand you seem to have plenty of energy and drive, but on the other you're not always sure what to do with these qualities. Life also has a tendency to upset the very best of your plans through sudden and often inexplicable events. This can be exciting or disturbing depending on other influences in your chart. You're enthusiastic and highly self-motivated, if somewhat impulsive, enjoying adventure and new horizons. You're full of good ideas, and once you've determined on a course of action then you've plenty of motivation to see it through to successful completion. You're independent and prefer to be given plenty of room to carry through your own ideas in your own way. Be careful that a stubborn streak in your nature doesn't prevent your overall success. It's likely that some of your friends think that you're a little odd or eccentric, but you're not overly concerned. You like to make your own way in life, even if it does mean that you stand out from the crowd. Full of paradoxes, you can be both arrogant or charming, which can make you an effective salesperson.

CAREER AND AMBITIONS



*The road up and the road down are one and the same
Heraclitus, Die Fragmente der Vorsokratiker c540-480BC.*

Saturn

The planet Saturn represents responsibility, boundaries and structure; structure that provides a positive framework within which we can build, or structure that limits our development and forces us to reassess our liabilities and assets. This planet is also linked with our ambitions, and how we approach the practical side of life. Saturn tells us about the traditions that have stood the test of time. This planet often represents the professional side of our lives, how we work to build what we need to survive.

Saturn is in the 3rd House

The planet Saturn placed in the 3rd House of your Birth Chart suggests that progress through the school system can present difficulties early in your life, which linger to a certain degree as you mature. These troubles vary from having difficulty learning to read and write, to suffering from shyness or loneliness at school, to being forced to change schools. As a result there may be a period of your life when you're prone to melancholy. You may doubt your own intelligence, causing you to hesitate before pursuing your education. Finally you realise that it's not lack of intelligence, but more a lack of confidence based on early childhood experiences. Once you learn to take yourself seriously, you can pursue your education with confidence, working on study and communication skills. You may even write and publish articles or books as part of your profession. Although the path to being taken seriously in connection with your writing isn't smooth, you can succeed through perseverance and hard work. You need to take care when planning short journeys, otherwise you're likely to experience problems and delays. While others seem to enjoy short trips, you always seem to be travelling under some sort of cloud. On the other hand, depending on other aspects in your chart, it may be that you enjoy travelling for business purposes only.

Saturn is in Libra

The planet Saturn in the Sign of Libra signifies that you're committed to both intimate and business partners, and these relationships have a significant effect on your private and professional life. In particular your primary partner or a close female friend is likely to play a profound role in your life. This can be positive or negative, perhaps both. You've refined tastes and the ability to work towards being able to satisfy these tastes, but it's the relationships in your life which are the most important influence. These influences are likely to be positive, because the planet Saturn is considered to be in a positive position in the Sign of Libra. However, it's also possible that you could suffer loss as a result of key relationships. You've the ability to arbitrate and bring together opposing parties, and this could help you rise above any difficulties. You could also use these gifts in your profession, choosing a job in diplomatic circles or social

work. You need only be wary of being too diplomatic. Sometimes it's important to express your own opinions in a forceful manner rather than try to please other people. If you can overcome this tendency to excessive politeness then you're able to achieve your ambitions through your liaisons with other people.

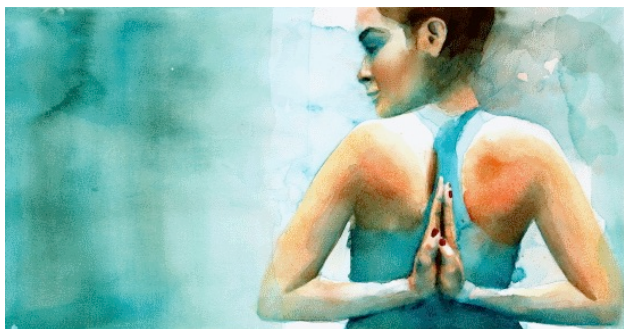
The Midheaven

The Midheaven is one of the important angles in a Birth Chart and is also known by astrologers as the MC or Medium Coeli. This angle tells us of our public life, our profession and social status. In other words, how we are viewed by the public, how we want to be viewed by the public and what type of profession we are likely to choose. It's also important to note the house position of the ruling planet of your Midheaven for further information about your career as this can greatly influence the interpretation.

The Midheaven is in Aries

With a Midheaven in the Sign of Aries and ruled by the planet Mars, you're likely to choose any career which gives you the freedom to follow your own path. You're a leader, rather than a follower, and prefer a profession which provides independence and autonomy. In fact, you have difficulty settling into a job which doesn't give you plenty of authority. You don't like to work with someone watching over your shoulder, preferring to go at your own pace. You may even have difficulty working in an office, where routine and schedules are the order of the day. You prefer to be on the road, or to work your own hours. Assertion, power and initiative are keys to you succeeding in your chosen career. Examples of famous people with the same Midheaven include Hollywood actress Meryl Streep, Prince Charles of England, UK politician Neil Kinnock, and Australian opera singer June Bronhill.

CREATIVITY AND ORIGINALITY



The artist must be in his work as God is in creation, invisible and all-powerful; one must sense him everywhere but never see him.
Gustav Flaubert, *Correspondence* 1857-64.

Uranus

The planet Uranus represents originality and unconventionality. This can be both the unusual and brilliant genius or the wilful rebel without a cause. This planet tells us the areas in which we break with convention, become innovative and experiment with new and exciting ways. In some circles of astrology Uranus represents the creative genius which comes directly via our soul or higher self.

Uranus is in the 5th House

The planet Uranus is in the 5th House of your Birth Chart suggesting that you've unusual, perhaps even unconventional creative abilities. This could be that your artistic talents display quite an unusual sense of taste, or that you're creative in a more scientific or metaphysical sense. Either way you like to be original both in your hobbies and your work. This placement also indicates unusual love affairs, and unconventional relationships with children. Perhaps you're too busy pursuing your creative interests to have time for children, or perhaps an unexpected event has prevented you from having children. If you do have children of your own, then they are likely to be independent, perhaps even unusual in some way. It's also possible that you and your children enjoy daring recreational activities together. In some cases you could experience a feeling of separation from your children. For example your children may assert their independence and go off on their own for a period of time, and you may find this emotionally painful and feel a sense of loss. On the other hand you may enjoy the fact that you have a child or children who value their autonomy. Scandal is likely to be a part of your life if you indulge in your fascination for love affairs. Gambling, or any kind of speculation, is also likely to be a rocky road, which is best avoided.

Uranus is in Scorpio

The planet Uranus was in the Sign of Scorpio from 1975 - 1981. It's important to note that Uranus spends a long time in each Sign, and therefore the interpretation applies to a generation rather than the individual. For a more individual interpretation you need to look at the house position of Uranus in your chart. Uranus in the Sign of Scorpio indicates that you belong to a generation which experiences highly-charged emotions and transformation in their lives. This generation holds many innovative ideas about change, and will need to call on these in order to transform the way in which the world uses its resources. This is the generation which will tackle the problems inherited from the past. It's likely that this generation will experience a

world-wide upheaval during their lifetime.

Neptune

Neptune is the planet of creativity and spirituality. It represents both the bliss of spiritual attainment and the heights of creativity. This isn't personal spirituality and creativity which comes at the expense of others, but gifts which can benefit humanity. This planet also represents the confusion that can accompany the road to discovering when we are being selfish, as opposed to when we are generously thinking of how our gifts can benefit others.

Neptune is in the 5th House

The planet Neptune placed in the 5th House of your chart means that you've a strong artistic nature, with an ability to be creative by using your intuition. However it's possible that you may have to make sacrifices before you can be creative. These sacrifices can be experienced in early childhood or as an adult, or both. For instance, as a child you may long to go out and play with other children, but you suffer from a debilitating illness. As an adult you may long to be an artist, but first you've to care for an ailing mother. This sense of sacrifice is also likely to be linked with children. Perhaps you can't bear children of your own, or there are delays and frustrations. You've a romantic and seductive side to your nature, which can attract beneficial or deceitful lovers, depending on other aspects in your chart. These aspects will also mean that you may be subject to deceit or benefits from speculative investments.

Neptune is in Sagittarius

The planet Neptune was in the Sign of Sagittarius from 1970 - 1984. It's important to note that Neptune takes about 164 years to make a complete cycle, spending about thirteen years in each Sign, and therefore the interpretation applies to a generation rather than the individual. For a more individual interpretation you need to look at the house position of Neptune in your chart. Neptune in the Sign of Sagittarius indicates that you belong to a generation possessing the gift of spiritual vision. You'll be able to help humanity focus on spiritual goals and become more expansive and inclusive of differing races and beliefs.

Neptune is Sextile Pluto

The planets Neptune and Pluto both move slowly through the Zodiac, and therefore any connection between the two planets affects Birth Charts for a short period of time. You were born in such a time. This combination in your chart means that you're interested in opportunities to bring about fundamental change to human values. You are aware of injustices in society and, depending on other influences in your chart, may prefer to fight against them rather than sit back and accept the ills of society. Your creative urges may be linked to politics, or expressing your political views through the arts or spiritual or charitable organisations.

CHALLENGES IN LIFE



The spirit of self-help is the root of all genuine growth in the individual.
Samuel Smiles, *Self-Help* 1859.

Pluto

The planet Pluto challenges us to transform our lives by clearing out our old habits to make way for the new, more rewarding ways of living. The process isn't necessarily an easy one, as most of us cling tenaciously to the comfort offered by habitual patterns, and are rather scared of new paths. Pluto shows us in which areas of our lives we need to grow, and to a certain extent whether we're likely to find the process of growing painful or joyful.

Pluto is in the 4th House

The planet Pluto is in the 4th House of your Birth Chart indicating that your home environment may be a challenge. It's possible that you've been affected by early childhood traumas, either by one particularly disturbing event in your family life, or by a series of upheavals. Perhaps one of your parents was an overwhelming, powerful figure in your life. As a result your adult home life is likely to reflect your childhood problems. Perhaps you're constantly changing homes, or perhaps you simply struggle to feel at peace in your home. You need to be careful that you don't recreate your childhood traumas in your home environment by living with someone who is abusive. Your challenge is to assert your own rights within your family without resorting to aggression, or without becoming the victim of someone else's aggressive behaviour.

Pluto is in Libra

The planet Pluto was in the Sign of Libra from 1972 - 1984. It's important to note that Pluto takes about 248 years to make a complete cycle, spending 12 - 32 years in each Sign, and therefore, the interpretation applies to a generation rather than the individual. For a more individual interpretation you need to look at the house position of Pluto in your chart. Pluto in the Sign of Libra suggests that you belong to a generation concerned with global justice and transforming human relations. Your generation possesses the ability to see the necessity for change in personal and global relations.

Chiron

Chiron is believed to be both an asteroid and a comet because it resides in the asteroid belt, but it also lights up every now and then like a comet. In astrology, Chiron is known as 'the wounded healer', the point in a birth chart where a person experiences early childhood hurts. These physical, emotional or mental hurts then become part of a lifelong journey towards healing and connection.

Chiron is in the 11th House

When Chiron is in the 11th House of your Birth Chart you find it difficult to find your place in social settings. You feel like the odd one out. This starts from a young age. It could be because you are different to your peers such as from a different culture. Or the feelings could stem from a childhood wound. You may resort to humour as a way of covering up your feelings of inadequacy. It's better to be the class clown rather than to be really seen for the quirky individual that you are. In other words, it's better to be causing the laughter rather than the butt of it. Your healing journey is one of learning to express your authentic self in a way that is acceptable by others, but more importantly honours your own inner truth. You need to find a tribe of like-minded individuals. You have much to teach others about how to respect and honour all people. You may be gifted in the area of group work, anthropology, and social sciences.

PURPOSE AND JOY



*He who binds to himself a joy
Doth the winged life destroy
But he who kisses the joy as it flies
Lives in Eternity's sunrise
William Blake, MS Note-book.*

A sense of purpose can help us overcome the most onerous difficulties in our lives, by taking the focus away from our failings and problems, and shining the light on our strengths and talents. By concentrating on our purpose we can distract ourselves from our troubles, and maintain the forward momentum of our lives. A sense of purpose can also lead to feelings of happiness and joy. Ancient astrologers believed that a person could either identify with their human body and human life, or could focus on a spiritual life. A rewarding spiritual life can help ease human pain and suffering, and inject joy into every day life. A sense of purpose can assist the process of transferring our identification from our human selves to the spiritual sides of our nature, and one of the greatest gifts of astrology is to help us determine our purpose.

The North Node

The North Node and South Node form an axis in astrology, which is said to represent one's destiny or spiritual quest in life. This axis is also linked with our purpose. The North Node points to a key lesson in our lives. It represents new experiences towards which we must aim during this life. We have already learnt the skills of its opposite point, the South Node, in the past. Now we must grow and stretch ourselves through the North Node.

The North Node is in the 1st House

Your North Node is in the 1st House and your South Node is in the 7th House of your Birth Chart indicating a quest for identity. You need to leave behind habits of becoming overly dependent on other people in order to become more independent. You're destined to discover the balance between self-assertion and giving to others.

The North Node is in Leo

Your nodal axis has the North Node in Leo and the South Node in the Sign of Aquarius denoting that you're destined to develop your inner strength. You may find that you experience times of loneliness. These times are part of your lesson to forge your own creative life in order to give generously to the world.

North Node is Conjunct Mercury

The North Node and the planet Mercury are combining to indicate that you're being urged to develop your communication skills. Your destiny in this life may be linked to some form of teaching or communication, with individuals or groups.

North Node is Trine Uranus

Your destiny is linked with the discovery of new and exciting thoughts and concepts because of the combination of the North Node and the planet Uranus. You need to make sure that you do not seek excitement at all costs, but direct your energies wisely. In this way you'll achieve your purpose, which is likely to be linked with making a contribution to humanity.

South Node is Trine Moon

The South Node and the Moon are combining to suggest that you're particularly aware of the importance of emotions, and are being encouraged to use your knowledge in a constructive way. However, there is a tendency for you to become stuck in negative emotional patterns of relating to other people. In other words you have difficulty expressing your emotions, and this may lead to periods of self-imposed isolation and needless worry about the future. This also creates obstacles for you achieving your purpose in life. Your challenge is to forge ahead with your life without relying too heavily on your emotions, and yet remaining responsive to other people.

South Node is Trine Jupiter

The South Node and the planet Jupiter are combining to suggest that you'll strike problems if you take part in grandiose schemes which are not based on solid groundwork. You're being challenged to develop your expansive ideas in a practical manner. Your quest is to work in a realistic and down-to-earth manner towards your goals.

South Node is Trine Saturn

The combination of the South Node and Saturn is a difficult one, indicating that you face restrictions in your current life and struggle to express yourself. At times you may feel that the world is a hard place, particularly the demands of daily life. It's possible that you've inherited some emotional or physical problems from your father, or his side of the family, which restrict your ability to achieve your goals. These problems can be overcome, but it's only through hard work and shouldering your responsibilities that you're likely to achieve your purpose.

The Ascendant

The Ascendant, or Rising Sign as it's sometimes called, is a key to discovering our purpose. Ancient astrologers believed that the Ascendant depicted our primary motivation as individuals. Some believed that it was one of the links to discovering what makes a person happy. When we're accomplishing our primary motivation then we're happy. The more modern Esoteric astrologers believe that this sensitive chart point reveals our soul's purpose. When we're carrying out our soul's purpose then we're joyful. They believe that acceptance of our purpose, or fate, can help us achieve success and satisfaction, and that meditation on the qualities of the Ascendant can help us focus on our life's purpose.

The Ascendant is in Cancer

The Sign of Cancer is considered "feminine" by Ancient astrologers suggesting that you're not a risk-taker, but are more likely to wait until you feel comfortable before pursuing your purpose. You're also likely to depend on other people to take the initiative. Cancer is also a Cardinal Sign denoting enterprise, enthusiasm, self-assertion and initiative.

Caring for others is your major purpose in life. This could be caring for your own family and friends, extended family, pets, children or the elderly, or caring for humanity, or all of these. You're impressionable, tenacious, hospitable, sympathetic and moody. You've strong feelings, ranging from the most pure feelings of compassion to the most intense feelings of hatred. On the positive side your life is motivated by the highest form of feelings motivating you to care for other people, and bringing both you and

the other parties a sense of warmth and emotional satisfaction. You are destined to protect and nurture the vulnerable in society. First you need to learn to protect and nurture yourself, and then you are able to nurture young people (or vulnerable people or animals) so that they can also achieve their true potential. However, on a negative note first you have to come to terms with your own sensitive nature and gently realise that you're highly impressionable and your feelings may be misguided. You're sensitive and easily hurt, and can either build a protective wall if you feel vulnerable, or seek revenge. You need to be wary of judging situations based purely on emotion, and ensure that you're constantly working for the good of others. Cherish the best qualities in yourself and others.

CONCLUSION



The text in this report has been written by Australian astrologer Stephanie Johnson. **About the Author:** The text in this report has been written by astrologer Stephanie Johnson. Stephanie was a journalist in Australia, England and the USA for 15 years before becoming a professional astrologer. She is currently the sole director of Esoteric Technologies Pty Ltd, and one of the creators of Solar Fire and Astro Gold. Stephanie is based in Melbourne, Australia. It is here that Stephanie writes the Solar Writers, runs Esoteric Technologies and her own international consultation business and astrology report writing service. You can find more information at www.seeingwithstars.net

Stephanie has a background in medieval astrology which can be detected in the direct style of the report. Medieval astrologers differed from modern-day astrologers in several ways. They didn't have a psychological approach to chart interpretation, but took a much more literal approach. They were very much concerned with the fortunes of an individual, whether a person would survive or not, and whether or not the person would experience good or failing fortunes. The author's particular area of interest in Esoteric astrology can be mainly detected in the section labelled "Purpose and Joy". In Esoteric astrology the purpose of an individual is linked to the soul. In other words it is believed that our souls determine our sense of purpose in the world, motivating us to put our gifts to good purpose.

About the Artist: The illustrations have been created by artist Jenny Barnes. Jenny is an artist living in Melbourne, Australia with her partner and two young children. Jenny has a home studio which she escapes to as much as time permits around raising two toddlers. Painting brings Jenny's mind and soul back into balance with the universe. Jenny can be reached at jennykbarnes@gmail.com

This report is meant more of an introduction to the wonders of astrology rather than a complete course in its intricacies. Further studies, or a consultation with a professional astrologer, are encouraged to explore this most ancient scientific and philosophic tool.

If you would like further information please contact Esoteric Technologies Pty Ltd PO Box 159 Seaford Vic Australia. Phone 0488 111 078. Email: seeingwithstars@gmail.com