



SOLAR WRITER

GODDESS

A SOLAR WRITER REPORT
for Emma Watson

WRITTEN BY BRIAN CLARK & STEPHANIE JOHNSON



COMPLIMENTS OF

ESOTERIC TECHNOLOGIES

ABN: 64 003 895 396 | PO Box 159, Seaford Vic 3198, Australia.

Tel: +61 (04) 8811 1078 | **Email:** admin@esotech.com.au | **Web:** www.esotech.com.au

Emma Watson

Female

15 Apr 1990

6:00 pm CEDT -2:00

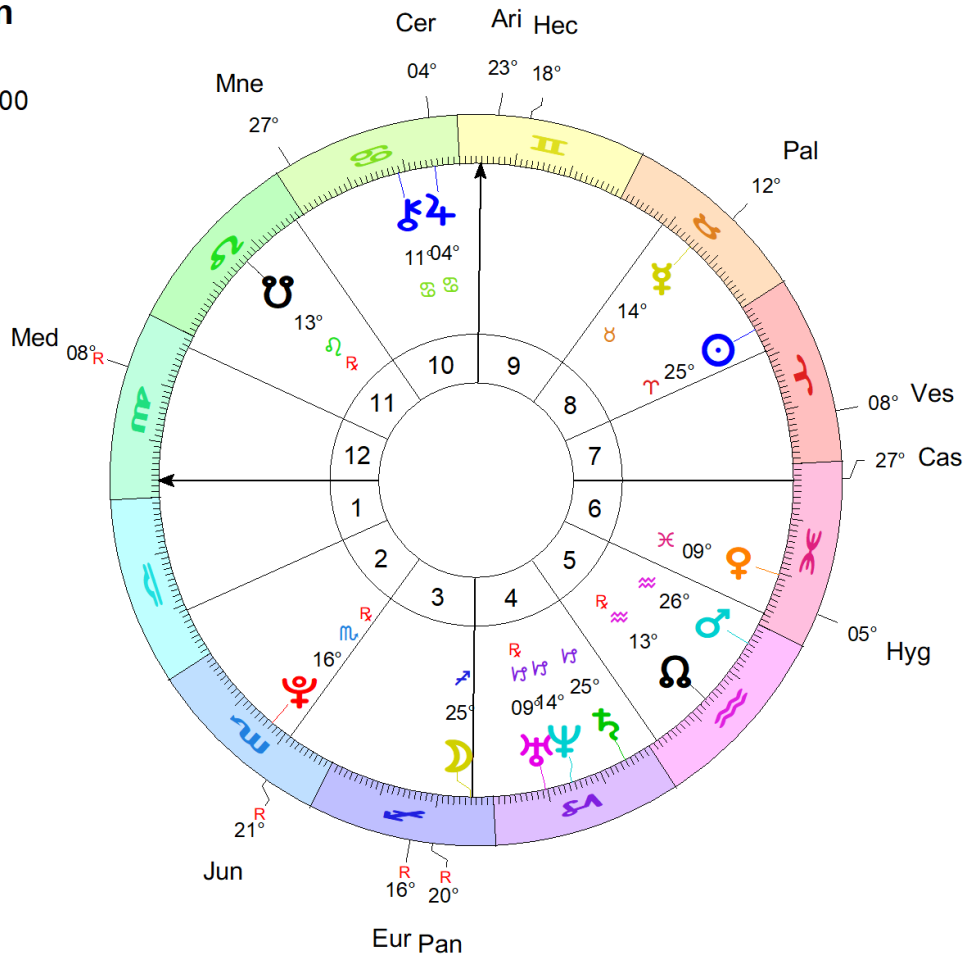
Paris

48°N52'

002°E20'

Tropical

Placidus



Key

Abbr	Asteroid
Cer	Ceres
Pal	Pallas Athena
Jun	Juno
Ves	Vesta
Hyg	Hygieia
Ari	Ariadne
Eur	Europa

Abbr	Asteroid
Pan	Pandora
Mne	Mnemosyne
Hec	Hecate
Cas	Cassandra
Med	Medea

Introduction



The Goddess is the custodian of life's mysteries and the primal world of archetypal forces. As representative of the world soul she engages us in the sacred rites of nature and reanimates life through the cycles of birth and death. Goddess culture flourished in the prehistoric period when magical consciousness prevailed, supernatural forces were deified and natural forces were revered. As consciousness developed through its phases the wisdom of the goddess was buried beneath the rational constructs of a scientific knowledge that erased the mysteries from life and excluded the magical processes.

With the advent of the asteroids the wisdom of the goddess is once again available to consciousness. Goddess wisdom reveals in the ancient wisdom of cycles, the intelligence of the inner life, the sanctity of divination, the mystery of healing and the necessity for sacrifice and ritual. The ancient feminine wisdom of the goddesses embraced all phases of life, celebrated its mysteries, ritualized its passages and knew the power of the natural world. The Solar Writer - Goddess report celebrates twelve goddesses and heroines and seeks their wisdom and guidance.

The maxim 'as above, so below' underpins the philosophy of astrology. Inner and outer lives are woven together through investing the celestial sphere with meaning. Therefore when astronomical discoveries are made astrologers find new meaning and revelation in them. Astrological tradition suggests that with the major discovery of a planet the collective is confronted with the conscious awakening of an archetypal force that may have previously lain dormant or been repressed. As the 19th century dawned a discovery of a small planet would be made, heralding the reawakening of feminine power and the wisdom of the Goddess.

Late in the 16th century Johannes Kepler first suggested that there might be a planet between the orbit of Mars and Jupiter. Nearly two centuries later the publication of Bode's Law reiterated this possibility. Based on the theory that all the planets were in a harmonic distance from the Sun the law suggested there should be a planet orbiting between Mars and Jupiter. When Uranus was discovered in 1781 its distance from the Sun conformed to the law giving greater weight to the theory of the missing planet. Finally on New Year's Eve 1800 a Sicilian astronomer spotted a new body in the region and named it Ceres after the patron goddess of his homeland. To the Sicilians Ceres favored their island and it was here they claimed Hades abducted her daughter.

One year later its orbit was confirmed and although small in comparison to the other planets the missing planet had become visible. But early in 1802 another body was sighted between Mars and Jupiter and named Pallas Athena. Astronomers wondered if a planet had exploded in this region and therefore more would be discovered. And they were. More than four hundred of these small planets had been named as the

19th Century drew to a close.

It was not until the early 1970's as the woman's movement began to accelerate that astrologers began to take note of the significance of these new bodies, which were named asteroids. In 1973 an ephemeris of the first four discoveries was printed and the astrological community began to experiment with these new archetypes. The first four asteroids were named after the Olympian goddesses who had been previously unnamed in the astrological planetary pantheon: Ceres, Juno and Vesta were the three sisters of Jupiter while Pallas Athena was his daughter. All four were prominent in Greek myth and their cults predated their male counterparts. Previously in the astrological pantheon only the Moon and Venus were available to represent the lineage of the feminine traditions. Renewed images of the feminine had now appeared in the astrological tapestry. As astrologers began using these potent images of the asteroids the cults of the ancient goddesses were rediscovered, paralleling the cultural reclamation of feminine power. With the discovery of the asteroids and their use in astrology the ancient feminine wisdom of the goddess was brought to consciousness.

Each goddess in your personal Solar Writer - Goddess report has a specific function, being emblematic of an important sphere of your life. Every one embodies a different aspect of the Goddess herself. However, all twelve are involved in the handiwork of the Goddess. Therefore underlying each individual goddess is the sanctity of being, the awareness of the seasonal cycles of our life cycle and the acceptance of inner intelligence, signs, symbols and dreams. All twelve honor the instinctual wisdom of nature and follow her guidance.

These twelve goddesses preside over the three spheres of Heaven, the Earth and the Underworld. Being Olympians the goddess Ceres, Pallas Athena, Juno and Vesta are the goddesses of heaven who oversee the important initiations and transitions of the life cycle. These four goddesses were also the first named asteroids and the ones most frequently referred to in contemporary astrological literature. They personify four potent feminine functions or orientations to life. The goddesses of the underworld are powerfully insightful and understand the deep waters of the unconscious, the complexity of feelings, the power of mystery and magic and the uncertainty of life. These goddesses may reveal themselves through a healing crisis, the psychic senses, loss, betrayal or a myriad of other mysteries that arise in our lives. Hygieia, Cassandra, Hecate and Medea are the four goddesses who plunge the depths of the unconscious realm. Finally the goddesses who rule the Earth symbolize our worldly concerns and attitudes. Ariadne, Europa, Pandora and Mnemosyne are the influential representatives in the world who watch over our loves and labors, as well as our trials and triumphs.

The Solar Writer - Goddess report is a celebration of twelve of the numerous asteroids. Below the asteroid goddesses and heroines have been listed by their order of discovery. Each asteroid has its unique cycle and position in the horoscope. Keywords are listed below to introduce you to the meaning of each goddess as well as other astrological correlations that have a similar essence to the asteroid archetype. Each goddess will be explored through her myth and cult to appreciate her ancient role and contemporary meaning. The oracular meaning of the asteroid goddesses and heroines is based on the individual cult of the goddess. Once familiar with the presence of each goddess or heroine we will petition them for an oracle based on their position by sign and house in your horoscope.

Ceres, Asteroid No 1, was discovered in 1801. Ceres is closely aligned with the archetypes of Pluto and the Moon and especially strong when the Moon aspects Pluto. Her process may enter our lives when Pluto transits the Moon or the 4th house.

Pallas Athena, Asteroid No. 2, was discovered in 1802. Athena is sympathetic to the air signs especially the justice and strategy of Libra and the intelligence and objectivity of Aquarius. She is aligned with the masculine archetypes of Mars and Uranus and close to Jupiter, her father's realm.

Juno, Asteroid No. 3, was discovered in 1804. Juno is the goddess of marriage and social customs. She

reverberates with Libra and the 7th house. Her passionate side is reflected through the 8th principle of Scorpio and interchanges between these two astrological principles reflect the goddess.

Vesta, Asteroid No. 4, was discovered in 1807. Vesta is the spirit of the 6th house, the domain of the sacred in the everyday, the rituals of work and well-being.

Hygieia, Asteroid No. 10, was discovered in 1849. The axis of health in the horoscope is the 6th-12th polarity. The Sun symbolizes the vitality and the ascendant suggests how we conduct that vital life force. Chiron is the archetype of healing. Hygieia is very much concerned with these principles.

Ariadne, Asteroid No. 43, was discovered in 1857. Ariadne's story plumbs the depths of the water houses. She leaves the familial terrain of the 4th house to be abandoned by her lover in the labyrinth of the 8th but awakens to her divine connection in the 12th. Neptune aspects to Venus or Mars may highlight these themes. Ariadne's process is revealed with transits to planets in the 8th house or Pluto transiting Venus or Mars.

Europa, Asteroid No. 52, was discovered in 1858. Taurus, Virgo and Capricorn and their rulers Venus, Mercury and Saturn represent the earth instinct. Of all three signs Taurus is the sign most closely aligned with Europa's passions and power. Planets in Taurus or the second house constellate the mythic pattern while transits through the second house or to Venus may evoke issues concerning values and resources

Pandora, Asteroid No. 55, was discovered in 1858. Pandora is a change agent and therefore may be sudden and unexpected like Uranus. Her curious nature and marking of threshold change is Mercurial, linking Mercury and Uranus. As an agent of transformation she has a Plutonic essence as well. Planets in Gemini or Mercury aspects to Uranus or Pluto highlight the nature of Pandora.

Mnemosyne, Asteroid No. 57, was discovered in 1860. The Moon records, reflects and reveals every heartbeat, breath and nuance of primitive life. Therefore the progressed Moon evokes memory as it progresses through the horoscope. Aspects between the Moon and Mercury as well as other planets aspecting these planetary archetypes reveal the process of feeling and rational memory.

Hecate, Asteroid No. 100, was discovered in 1868. Aspects to Mercury may signal how we might manage crossroads, our facility for change and adaptability. Crossroads in the life cycle are mapped out by the cycle of the slower moving planets while personal crossroads are reflected in the transits of the transpersonal planets to the personal ones. Note the South Node of the Moon.

Cassandra, Asteroid No. 114, was discovered in 1871. Cassandra revels in the world of Neptune - the archetype of the medial woman. Aspects between Mercury and Neptune, or Mercury in Pisces reflect Cassandra. Interconnections between Jupiter and Pluto may also ignite a similar pattern.

Medea, Asteroid No. 212, was discovered in 1880. Medea is similar to the archetypes of Pluto and Scorpio, as she understands the process of metamorphosis. Planets in the Eighth House or in aspect to Pluto may conjure up the potent magic of Medea.

Goddess Mythology



Mythology serves as a psychological record of human development recording the imagination and symbols of the culture. Mythic stories speak to the inner life as they deal with universal themes and truths illustrating the archetypal forces that influence the course of the human drama. In archaic societies myths offered an explanation of the world and its creation, the cycle of birth, growth and death, how things came into existence as well as how they disappeared. In contemporary times we have scientific explanations for many of the ancient mysteries, but myth is just as valuable to help us to imagine our own origins and invest our lives with meaning. Mythic themes stir the imagination and broaden the horizon of the individual's story placing it in a context of a larger story.

Mythology is the link between the magical phase of being when consciousness participates in nature and the rational phase when we are separated from the natural world. The magical phase embraces the culture of the Great Goddess when life is full of mystery and wonder and we are one with the natural order, not separated or expelled from it. In this phase all nature is sacred as all life is invested with the divine. The asteroids are surrogates of the Great Goddess and reconnect us to her culture. As emissaries the asteroid goddesses and heroines invest life with the sacred, value imagination and mystery and inspire ritual and sacrifice in order to reconnect to the wellsprings of her magical forces.

Following is a summary of their genealogy and mythic tradition. Let the myths resonate with your imagination and speak to you in their own way.

The Roman goddess Ceres is also known as Olympian goddess, Demeter. She is the daughter of the Titan Cronus and Rhea and mother of Persephone. She is the Corn Goddess who personifies the agricultural cycle of fertility and harvest, as well as loss and renewal through her daughter Persephone.

The Olympian goddess Pallas Athena was a daughter of Zeus, born from her father's head after he had swallowed Metis. The Romans referred to her as Minerva. She is revered as representing the wisdom of reflection and strategy.

The Roman goddess Juno is also known as the Olympian goddess, Hera. She is the daughter of the Titan Cronus and Rhea and mother to Ares, Hephaestus and Hebe. She is the goddess of Marriage and Social Customs who oversees the seasons of a woman's life.

The Roman goddess Vesta is also known as the Olympian Goddess Hestia. She is the daughter of the Titan Cronus and Rhea and is the goddess of the Hearth who embodies sacred space.

Hygieia was the daughter of the Greek god of healing, Asclepius and the beloved goddess of Health. She is the sister of other minor healing deities and heroes including Panacea, Machaon and Podalirius. As the goddess of Health, Hygieia is the giver and preserver of well being whose function is to maintain a healthy relationship between body and soul.

The Cretan goddess Ariadne was from the Minoan dynasty. She is the daughter of King Minos and Queen Pasiphaë, granddaughter of Helios and Zeus. She is sister of Phaedra and half-sister to the Minotaur. As the wife of Dionysus, Ariadne embodies the sacred marriage having endured the trials of betrayal and abandonment.

Europa was a Phoenician princess, sister to Cadmus and matriarch of the Minoan dynasty, mother to King Minos and grandmother of Ariadne and Phaedra. She represents the creative and earthy process that supports and guides worldly success.

Pandora was the first woman, shaped by Hephaestus, to be the harbinger of a new age. She was married to Epimetheus and was the mother of Pyrrha. As a representative of the ancient ways of the goddess, Pandora brings the gift of hope.

Mnemosyne was a Titaness, a daughter of Gaia and Uranus, known as the goddess who personified the faculty of memory. As the mother to the Nine Muses she represents enchantment, inspiration and the power of remembering.

The goddess Hecate was the daughter of Perses and Asteria, the granddaughter of Phoebe, and a powerful goddess revered by all the gods. Later she became an attendant to Persephone. As an underworld goddess she was represented in her three-fold nature and was worshipped at the crossroads and as the guardian of transitions.

Cassandra was the daughter of Priam and Hecuba, the regents of the powerful dynasty of Troy. She was the twin sister to Helenus and sister to seventeen other siblings including Paris and Hector. From an early age she had oracular ability, yet no one believed her. Cassandra carries the feminine mysteries of divination even in a contemporary world that devalues the sacred tradition.

Medea was the Princess of Colchis, granddaughter of the Sun god, Helios and niece of the sorceress, Circe. Medea is the great witch of the Greek myths, knowledgeable in herbs, healing and the art of metamorphosis.

Ceres - The Earth Mother



*'I died to mineral and plant became
Died from the plant and took a sentient frame
Died from the beast and donned a human dress
When by my dying did I ere grow less?'*
Rumi

Ceres is the Roman agricultural goddess whose gift of grain, 'cereal', was distributed to mankind as thanksgiving for the release of her beloved daughter from the underworld and also as an eternal symbol of the continuity of life. Ceres is the goddess of agriculture who instinctually knows the cycle of loss, death and rebirth through her attachment to her beloved daughter.

The Roman goddess was modeled on her Greek counterpart Demeter whose central myth focused on the loss of her daughter, Persephone. It was this myth, which inspired the greatest initiation rites in the ancient world - the Eleusinian Mysteries. These mysteries re-enacted the terrifying journey of Persephone into the underworld and through these rituals both male and female participants faced their terror of death and became thankful for the gift of life.

Ceres, corn goddess, patron of farm life and vegetation is both an agricultural and underworld deity. She is an earth mother who presides over the cycle of fertility, birth, harvest, decay, death and rebirth. >From the archaic period the goddess protected and insured the fertility and propagation of the crops and livestock. Her sanctuaries were placed near arable land, outside cities, where pilgrims would come to petition the goddess for a fertile crop and feast on the abundant gifts of food that the goddess provided.

Her myth was more ancient than her male contemporaries and reached back to the epoch when deities of the underworld (death) and the earth (life) were one. Ceres represents both loss and harvest and her classical story embraces each aspect in the myth of her daughter who becomes the Queen of the Underworld.

The myth of Ceres/Demeter and her daughter is a heartbreaking narrative of closeness, separation, grief and reunion, the motivation behind the establishment of the Eleusinian Mysteries. The brutal breaking of their attachment is the impetus that allows each woman to develop independently of one another into sovereignty over their own sphere. Since antiquity this poignant portrait of the mother-daughter bond has probably been the most cherished of all the Greek myths. The classical myth is also remarkable as it places the feminine characters at the heart of the narrative with the male gods on the periphery honoring a sacred and profound feminine story. The Ceres myth was first told in a hymn to the great goddess Demeter.

Kore, the innocent maiden Persephone, was playing in a meadow gathering flowers when the earth rumbled beneath her and broke open. Suddenly from the chasm in the earth a chariot drawn by four black horses appeared. In the chariot was Hades, the Lord of the Underworld, who seized her. As she struggled to break free the chariot carrying them disappeared into the black hole. Demeter wandered aimlessly in search of her daughter. No mortal or god could help her with information about her daughter's disappearance. Finally after nine days she met Hecate, the goddess of the crossroads. Hecate heard Persephone screams, the only clue to the abduction.

Demeter raged and withdrew the gift of fertility from the earth causing a great famine. She also withdrew herself from the company of the gods and in disguise wandered amongst mortals unnoticed. Grief-stricken, depleted and withered, Demeter wandered to Eleusis where she met the daughters of the local king who pitied her and brought her home. Their mother gave Demeter the task of caring for her infant son. Demeter nursed him on ambrosia and nectar and every night she would baptize the infant in fire in order to render him immortal and safeguard him from the fate of the eternal cycle of life, death and rebirth. However, one evening the Queen interrupted Demeter in the middle of her ritual and screamed in fear for the boy's safety. At that moment the cycle of mourning was broken. Demeter cast off her old age, changing her size and appearance to reveal herself as the great goddess and commanded the king to build her a great temple and introduce her worship to the people of Eleusis.

However, Demeter was still furious at the abduction of her daughter and withheld the new crop's seed so the earth continued to be barren. Zeus intervened and demanded Demeter return to Olympus and fulfill her duties. Demeter refused. Finally Zeus in his anguish agreed to release Persephone from the underworld so the crops would grow again. Persephone was eager to be reunited with her mother. But before she left the underworld Hades gave her a pomegranate seed to ingest. Innocently Persephone took the seed and swallowed it now binding her eternally to this place. Having eaten in the underworld meant Persephone now belonged there.

Demeter and Persephone's reunion was ecstatic and both rejoiced at the sight of one another even though they knew they would not be together as in the past. As the mother, Ceres indicates the necessity to nurture a creative project even though that means letting it go. By relinquishing an attachment a phase of the cycle ends and prepares us for a new beginning.

Astrologically the goddess Ceres represents the feminine wisdom that acknowledges loss. Loss is intricately woven into the tapestry of life; attachment, separation and loss are part of life's greatest mystery. Feminine wisdom knows that grief is only one phase of the great wheel and mourning allows the process to be complete so that life may be renewed. Following is a portrayal of the goddess Ceres in your natal horoscope.

Ceres is in the 10th House

Your career is an important outlet for your own ambitions and your need to look after other people. Vocationally you may be drawn to a helping profession. You may spend more time at work than you should, neglecting other areas of your life. Are your loved ones complaining that you don't spend enough time with them - that work is a constant distraction? Are you spending more time with your boss than with your spouse? Or caught up in caring for those in need? It is possible that you spend many hours at work and seek a prominent position in society because you feel that you don't fit in anywhere else. As such your work fulfills a need. You feel soothed when you are at work. However, it is also possible that you feel a strong need to contribute to society in some way, shape or form. Your choice of career is likely to reflect your need to nurture others - nursing, catering, social work, psychology, teaching, medicine, medical research or parenting. Seeking refuge in your private life can help maintain a health balance in your life, although it is likely that you will always focus more on your career.

Parenthood could also play a prominent role in your life. The goddess Ceres in the 10th house of a birth

chart can indicate a father or mother who decides to become a full-time parent, discarding all other interests in pursuit of caring for his or her offspring. It is important to maintain a balance and to let go when your children decide to grow up and leave the family home. Children are likely to rebel if not given appropriate amounts of freedom. Conversely letting go is likely to result in a fruitful adult relationship. It is also possible that you experience difficulty in the parenting role preferring your career to the responsibilities of caring for young children. If this is the case then you are likely to experience a more positive relationship with your adult children.

In a woman's chart you need to be particularly diligent in your relationship with any female offspring. Your relationship with your daughter, stepdaughter or any other girl child in your care needs to have the correct balance of closeness and freedom.

Ceres is in Cancer

Food plays a central role in your life because it is the primary way that you take care of yourself and loved ones. You are likely to enjoy preparing and eating food both by yourself and with other people. Feeding your family and friends can be a source of joy. Of course other aspects of your chart may indicate that you are not a great cook but rather a true appreciator of fine food. If this is the case then you may prefer to eat out or have other people cook for you rather than preparing your own meals. Either way you are likely to enjoy many pleasurable meals seated at large tables with friends and relatives. It is also possible that you suffer from food allergies and therefore benefit from following a strict diet. However, this will largely depend on other aspects of your birth chart and you will still enjoy your food.

Your relationship with your mother is also likely to play a significant role in your life, affecting the way in which you relate to those close to you. The process of separating from your mother deeply affects you. Hopefully you have a close and warm bond with your mother, or a key mother figure, and develop a sense of security and comfort before maturing and leaving home. If your bond with your mother is not a positive one then you are likely to feel abandoned. You will then need to ensure that you do not abandon your own children, or overprotect them. This is particularly true for female children with whom you feel a strong affinity.

You may feel a strong attachment to your immediate family members, enjoying the sense of belonging that results from strong family ties. However, it is also possible that you enjoy looking after other people's children or underprivileged members of society. Like the crab you are able to retreat to your own home when necessary, but are also eager to strike out into unknown territory. Therefore you could be interested in a career or hobby in the fields of teaching, childcare work, nursing, social work, trade unionism, multi-cultural education, and the hospitality industry.

On the whole this is a constructive placement of the goddess Ceres as there are ample opportunities in your life to express your close bond to those you love. Seasons come and go and you enjoy the cyclical nature of family life.

Pallas Athena - The Wisdom Of The Warrior



*'I celebrate the powers of Pallas Athena, the protectress of the city:
Dread, as Ares, She busies herself with the works of war,
With the sack of cities, with the battle-cry and with the combats.
It is She also who saves the fighters that go to war and come back alive.
Hail, Goddess, give us good fortune and happiness Pallas.'
Homeric Hymn 11*

The architectural masterpiece, the Parthenon, was dedicated to the goddess whom the classical Athenians cherished. Pallas Athena was their advocate for law and order, the teacher of household arts like spinning, weaving, and cooking, as well as their protector and defender.

As their goddess of war she helped the Greeks defeat Troy, the Athenians repel the Persians; as their goddess of useful and decorative arts she inspired them to build exceptional monuments and temples. The goddess of merciful justice transformed the law courts and at the dawn of the fifth century she inspired the democratic shift in Athenian politics. Athena was the revered goddess of the Athenians who celebrated her birthday each year with a great festival and procession through the Agora up to the Acropolis.

As a multi-tasked goddess many images are associated with Pallas Athena but it is the owl that reminds us of her wisdom. Her intelligence is 'bright-eyed' and sharp, focused on the immediate, located in the present, aligned with the head and not the instinct. Pallas Athena embodies the rational and encourages left-brain thinking. Her wisdom controls the instincts, learning to direct them into heroic pursuits to eradicate what is dark and primitive. She is civilizing and organizing, bringing culture and cultivation to mankind. Justice and law are part of her new order replacing retaliation and revenge.

Strategic, reflective and controlled her craft and skill is mirrored in the multiplicity of devices she offered man, the fertility of her ideas and the usefulness of her inventions and techniques. As Pronoi she is 'before knowing' embracing forethought and strategic thinking. As a warrior queen she was born from the forehead of her father Zeus, fully armored and mature, suggesting that the wisdom of goddess had been reborn into a new order. As father's special daughter Pallas Athena mirrored the rational intelligence and counsel of Zeus. Metis, the mother of Athena, was an ancient goddess of wisdom known as Wise Counsel or Cunning Intelligence. She knew the feminine mysteries, the intelligence articulated by the heart and the inner world of instinct and intuition. From her Pallas Athena inherited another kind of wisdom: the wisdom of intuitive knowing often experienced in the belly as a 'gut instinct'. It is a knowing that may speak through symptoms or disease, through creativity or craft, or radiate through stillness and tranquility or even erupt in anger or

hostility. It is a wisdom born out of an intimate connection between mind and matter, a fluid way of being that the ancient Greeks knew as Sophia.

Athena is a proud daughter born from a power struggle between her powerfully dominant father and her intuitively wise mother. Consciously Athena only knows her father's way and the new order. Born of man, like Eve, this myth is often cited when tracing the emergence of 'father-right' from the long held tradition of 'mother-right'. The daughter is now aligned with the sky father who colludes in rejecting the earth mother. The tables have turned in the familial pattern and now it is father and daughter colluding against mother, no longer mother conspiring with her youngest son against the father. When Athena emerges she reflects the need for logic and rationality rather than feeling and instinct. Her path follows the reason of the head, aligned with her father, not the impulse of the heart, the vulnerable feminine side that she has not been nurtured by.

Like Eve, Athena's feminine legacy is not so easily erased. Both their myths contain the image of the snake, a sacred symbol of their legacy of feminine wisdom, healing and regeneration. By the classical period Athena's wisdom became subjugated to Zeus. Shaped by the masculine wisdom becomes linear, logical and rational. Metis is no longer acknowledged as her other parent. The internal wisdom of cycles, intuitive knowing and the complexity of intrapsychic understanding becomes concealed under Athena's armor.

Athena is also associated with the arts of healing, health and regeneration. As Athena Nike she was the goddess of Victory, first victorious in war and later a victor on the sports field. Athena signaled victory and as a patron of heroes she was also known as the goddess of the near, as she was always close to the hero and a staunch supporter of the heroic. As the goddess of war and defender of her father's realm Athena became aligned with the hero as his guide and protector. In mythic portrayals of the hero, Athena stands behind or beside him as his staunch ally against the monstrous and dark forces. When Pallas Athena appears prominently in a birth chart she encourages us to be heroic and battle the regressive forces of our instinctual nature. It is necessary to reflect on the situation and not react emotionally, detaching enough to formulate a decisive plan of action.

In astrology the goddess Pallas Athena represents the reflection and meditation that develops out of the turmoil of chaos and uncertainty, helping us to become more strategic and deliberate in our actions. Metis is the valued intelligence that guides our instincts and plans strategically and arises into consciousness at exactly the right moment. Pallas Athena discerns and through reflecting on emotionally entangled situations allows consciousness to develop. Following are the house and sign descriptions of the goddess Pallas Athena in your horoscope.

Pallas is in the 8th House

You are skilled at managing other people's resources - their finances, property investments and their personal matters. You are insightful, perceiving the best methods for other people to move forward in their lives. You are a born manager, able to listen, learn and make decisions. For this reason you could enjoy accounting, stock market investment, property management, publishing and sales. These skills also mean that you are skilled at running a business enterprise, either your own or someone else's. You can manage all facets of a business as well as foretell business trends and advise on methods of implementing change. You might be surprised by how quickly you achieve promotion within some enterprises. You have a strong set of business ethics to which you adhere and expect others to respect your rights. If anyone should fail to respect your code of ethics then you are likely to become warrior like in seeking justice.

While you have excellent management skills you also have high expectations. Can others always meet these expectations? You need to ensure that you choose your battles wisely. You find it difficult to let go and trust a natural course of justice. Your battle skills are considerable. You are able to rally resources and allies and beat the opposition; however, you need to make sure that you are acting with integrity. Are you really seeking justice or are you being self-righteous? Are you seeing things from all perspectives? Have people simply become numbers? The answers to these questions will help you choose your battles wisely. Make sure that you are protecting your own rights, or other people's rights, not seeking revenge. The goddess

Pallas always preferred mediation rather than confrontation. Conversely if you have walked away from a battle do not have any regrets. Justice does not need to be personally sought in order to apply. Integrity is more important; otherwise you may win the battle but lose the war. In other words a court of law may find in your favor but you then have to deal with the consequences.

Your insights are valuable in business, but you are also wise in understanding human nature. Your friends, colleagues and loved ones may rely on your advice in deeply personal matters. For this reason you may enjoy counseling, social work, psychiatry or psychology as a profession. You may also be a gifted teacher, able to help others learn valuable lessons about life, not just one particular subject. On the other hand you may simply delight in learning about metaphysical matters for your own personal edification. Books about the meaning of life and death may fascinate you, as do other people's psychic experiences. The goddess Pallas discerns and through reflecting on emotionally entangled situations allows consciousness to develop. This is one of your greatest gifts, the ability to shed light on entangled situations and help others rise above them.

Pallas is in Taurus

Common sense and wisdom are the foundations of your life. You are wise and sensible, often offering counsel to your friends, family and colleagues. You can be relied on to offer sound advice, based on a solid understanding of human nature and most situations. You are not judgmental because you understand the basic principles of human nature including the best and worst of behavior. Your presence is comforting to those in need. You strive for security in your own life, but only because you know that a stable base will enable you to provide for yourself and your loved ones.

Others feel safe in your presence. It is possible that you have healing gifts, which you can explore through conventional medicine or unorthodox modes. You may feel drawn to study the human energy field, discovering psychic and healing gifts, which you are then compelled to use through some form of practice. Healing may present itself in other ways. For instance you may participate in environmental groups that aim to heal the earth, or work in political groups that lobby on behalf of minority groups thus healing rifts in society. You feel compelled to express your gifts in a practical manner. You are likely to be a hard worker with a strong link to earthly wisdom. You have the ability to manifest the resources that are needed.

Gardening and domestic responsibilities are likely to come easily to you, offering you a way of nurturing yourself and your loved ones. In turn you may gain sustenance from communing with nature or participating in the arts. You may have artistic talents or you may simply enjoy viewing other people's creative endeavors. Music, singing, theater, and dance are all likely to play a part in soothing your soul - either via your own talents or by supporting loved ones in their artistic pursuits. It is possible that you also enjoy a tactile hobby, hands-on arts and crafts such as pottery, quilting, bead making, stained glass or hot glass and creative kiln work. Some forms of astrology also believe that the Zodiac sign of Taurus rules the animal kingdom, the natural laws that govern the earth. Therefore with the goddess Pallas in this sign you are likely to feel a strong affinity to the earth and all of its inhabitants. You may feel a strong urge to protect animals, small children and those less fortunate than yourself. This placement of the goddess is a profound one, indicating that your gifts and abilities to counsel and strategize are considerable. You are unlikely to fight unless provoked, but you do have the ability to rally resources to protect yourself and other people, and are a powerful influence on those around you.

Juno - Socializing The Soul



*'And wheresoever we went, like Juno's swans,
Still we went coupled and inseparable.'
As You Like It, Shakespeare*

Juno Regina shares the honour of the highest deity in the Roman pantheon as queen next to her husband-brother Jupiter, king of the gods. Each woman had their own guardian spirit named Juno, who guided their transitions into the stages of motherhood and marriage. As a light bringer she was also invoked for protection during childbirth. As the goddess of marriage her Roman name Juno was the derivative of June, the season of the bride. Women celebrated her annually in the festival of Matronalia. By the Roman period Juno had become emblematic of the woman as wife and citizen presiding over social customs and duties. In earlier Greek myths Juno was a powerful goddess in her own right known as Hera, the adored feminine deity of many powerful city-states.

The derivation of Hera's name may be related to Hora or season, as she is custodian of the seasons of a woman's life. On the Olympian pantheon she was the goddess of marriage and embodied social ritual and custom. At her cult in Argos young girls ran races to prepare for their marriage and the rituals of womanhood. In the Greek myths Hera was a wife and unlike her husband Hera does not have affairs. However, in Greek myth Hera also seeks revenge upon her husbands' liaisons with others. By the classical period the tales of Zeus and Hera rival contemporary soap operas where the cycle of betrayal, outrage and revenge is the central plot. Hera consistently plots revenge against Zeus' lovers and children from these affairs. However, there was an earlier time when the Olympian couple was not always locked in power struggles or scheming and bullying each other. This was when they first fell in love in the palace of their aunt and uncle where they were being hidden, protected by their mother Rhea from the familial wars that were raging with their father. Here in the great palace beneath the sea, they consummated their relationship, a relationship that was to remain secret for nearly 300 years. Underpinning the later myths are fragments, which reveal Hera was an ancient goddess before she became aligned with her brother in a sacred marriage.

Epithets of Hera such as 'cow-eyed' refer to her earlier association with the earth and agriculture, while her epithet 'of the white arms' may link her to an association with the Moon. She is often depicted in three phases as the maiden, the fulfilled and the solitary, a trinity of aspects represented by Hebe, Hera and Hecate. Hebe was the daughter of Hera and the cupbearer to the Gods who became married to Heracles after his ascension to Olympus. In this aspect Hera is the maiden, the youth and the aspect of the feminine that retains her virginity, even in relationship. The central phase was motherhood, wifehood and a woman of

power. Local folklore suggested she bathed in the streams of Argos where she was able to regain her virginity lost in the marriage with Zeus. Hecate was associated with the final phase embracing Hera's aloneness and need for solace. At times Hera would leave Zeus to go off on her own to pursue her needs for privacy, renewal and worship.

Hera was indigenous to Greece long before Zeus was triumphant. The cult of Hera may have been so powerful that unlike the other goddesses Zeus was unable to be dominant, settling instead for an equal relationship. Her cults on Samos and in Argos are linked to the prehistorical period. On Samos one of the first mammoth stone temples of the archaic period was built in honor of Hera. Similarly her temple at Olympus predates the magnificent one built for Zeus. No doubt Hera is an older goddess like Demeter and Hestia, her sisters who were born to Cronus and Rhea before their brothers. However, to incorporate Hera into the politics on Olympus she became the wife of Zeus and mother to his children.

Another mythic fragment, which suggests Hera is a powerful ancient goddess, is her link to Heracles. Even though their relationship is estranged Heracles is named for the great goddess. His name literally translates into the glory of Hera. Hera whose name closely resembles hero is aligned with the greatest of all heroes, Heracles and plays a potent role in many heroic sagas. Their antagonistic relationship ironically spurred him on to become the greatest hero and ironically myth depicts Hera as his mother-in-law. No longer the object of her scorn Hera has challenged Heracles to become the hero. As mother-in-law she models a strong and uncompromising woman who demands the hero be the best man for her daughter.

Juno and Hera are the composite that portray the seasons of a woman's life as well as the evolution of woman's roles. The spirit of Juno in contemporary woman has new power and possibilities and the placement of the goddess in our horoscope is an invitation to challenge the constructs of the social roles that are inhibiting for us. As a partner and equal Juno is supportive, enterprising, challenging and confronting helping shape potentiality into reality.

In astrology the goddess Juno represents the status and achievement in the world that are intricately aligned with social customs and tradition. Equality in relationship is necessary at all stages of the life cycle to insure both inner and outer fulfilment. Juno's ancient legacy is equal relationship and through her experience you can become aligned with your heroic self. Descriptions of the goddess in your astrological chart follow:

Juno is in the 3rd House

You are seeking a marriage of like-minds, your intellectual equal. However, this is a challenging placement of the goddess Juno because it indicates that you may have fixed ideas about the type of person you would like to marry. You can perhaps miss an opportunity for a strong union because a potential partner does not fit your fixed ideas of love and commitment. It is also possible that you are scared of committing yourself to another person, worried that your own interests may suffer.

You may be fortunate enough to form a bond with another person, based on mutual interests, but flexibility is a challenge for you. If either party's interests change during the course of your marriage, then divorce is likely. The point is that you are totally committed to your own ideas, passionate about your own pastimes. These interests may involve working with groups of people, or forming strong bonds with other people, but this is not conducive to the intimate demands of a one-to-one commitment. This hesitancy to bestow your affections on one person is not necessarily a negative trait, but it does make marriage a challenge, because you need to have the ability to adapt to someone else's needs and desires. Depending on other aspects of your birth chart you may eventually form a bond with one special person, perhaps marry based on intellectual compatibility. However, you also need a relationship that has a strong base of trust and gives both partners the opportunity to pursue your own passions - a meeting of true hearts and minds. In other words unconditional love becomes vital for the success of any union.

Although marriage may be a challenge, you do have the ability to form many and varied friendships with people who share your interests. You may even choose to live in a communal setting, sharing common

beliefs. Having shared a powerful bond with a sibling or friend you may find it difficult to integrate this bond into your new relationships. Comrades are likely to come and go in your life, offering you ideas and support momentarily before moving on. The people who cross your path do so for a purpose. Therefore you can be assured that if you do marry, there is a purpose. Otherwise you can choose to have all of the advantages of friendship without the necessity of making a long-term commitment.

Juno is in Scorpio

Love and marriage are central forces in your life. Your choice of a marriage partner is likely to influence the direction of your life and your emotional well being, more so than other people. You may fall in love with someone from a foreign land, get married and travel to your spouse's homeland thus transforming your life. On the other hand you may, when young, choose an unlikely partner who betrays you in some way. The emotional rage that erupts is surprising to say the least so it is necessary to be wise in how you express this rage. The goddess Juno is asking you to find your sense of self-worth and power within yourself rather than seeking personal power through marriage. If you do not learn this lesson at a young age then your partner's life choices are likely to have a dramatic influence on your own life.

You are vulnerable when it comes to marital relationships as you have the capacity to merge on the deepest of levels. Your emotions, your psychological and sexual well being, along with your finances are at risk in marrying the wrong person. The goddess Juno is asking you to be discriminating and choose potential partners carefully and wisely. Be careful not to let your passions rule your decisions when it comes to relationships, particularly when you are young. You are likely to fall deeply in love, enjoy a passionate union and leave the rest to fate. If you are really lucky then your lover will be a wise and wonderful mate, someone who returns your love in full. Then your marriage can be rich and sacred.

On the other hand you may discover hidden forces start to manifest as daily dramas. Jealousy, possessiveness, battles over money, extra-marital affairs and other vices may be the result of your inability to discern between lust and love. These could stem either from your own feelings of inadequacy or from your partner's. Either way your marriage could become a battleground if you do not honor your own or your spouse's emotional and psychological needs. In other words you need to develop a sound psychological understanding of your marriage and then take action to either heal the wounds or end the battle. The goddess Juno is strong in the sign of Scorpio so the good news is that you do have the ability to learn the lessons of love and form a strong and lasting bond. Once you have learnt to listen to reason as much as passion when choosing a life partner, then you are likely to form a sacred union. Loyalty, intimacy and commitment are within your grasp. The Queen of the ancient Heavens can grant you the ability to transform your life through your marriage in a way that brings true emotional and financial rewards.

Vesta - The Inner Life



*'Leave those vain moralists, my friend, and return to the depth of your soul:
that is where you will always rediscover the source of the sacred fire which so often inflamed us with love of
the sublime virtues;
that is where you will see the eternal image of true beauty, the contemplation of which inspires us with a holy
enthusiasm.'*

Jean-Jacques Rousseau

The cult of the Roman goddess Vesta was connected to the Greek Hestia. However, the Roman Vesta had considerably altered from her Hellenic counterpart. By the Roman period the sacrament of virginity was liberalized, no longer conceptualized as a psychic state but now institutionalized as a spiritual way of being. Priestesses of Vesta, known as Vestal Virgins, served the goddess for a period of thirty years. While the position was privileged it also was one of great piety, devotion and responsibility. Vestal Virgins tended the sacred flame and guarded the Palladium, the secret objects brought from Troy to preserve the memory of the ancient city and protect the new satellite city of Rome. However, in ancient Greece Hestia was the embodiment of an internal and sacred space not a religious institution. Vesta's heritage reaches back to the traditions of honoring the authenticity of the inner life as symbolized by the spirit of the sacred flame, not a system of regulations.

In ancient Greece the goddess received the highest respect. Acknowledged as the deity mankind must first honor when feasting and drinking the goddess embodied grace and virtue. Veiled and virginal her sanctuaries were places of refuge, asylum and political peace. Constant, focused and disliking change Vesta is the hearth, a symbol for both the center and the focus of the home as well as the metaphor for family life and the family circle. As custodian of the hearth she is central to psychic life representing the sacral center, the goddess who honors sacred space and protects holy images. She embodies spatiality, conferring safe places to congregate, mediating soul by giving it a hallowed place to be acknowledged. As a virgin (unto herself) goddess Vesta is the custodian of soulful space personifying the stillness at the center of our busy everyday lives. As goddess of hospitality she also welcomes travelers across the threshold offering sanctuary and hospice. Vesta is the continuity of family life and the coherence it brings to our everyday experiences. Vesta was the first-born child, the first devoured by Saturn and the last one to be disgorged from his belly. Therefore she represents the beginning and the end, the alpha and the omega, the eternal cycle. Vesta is not a part of the outer rim of the cycle but situated at its center, personifying stillness, discretion, centering and immobility, aspects of her Greek counterpart, Hestia.

Few Greek myths remain of Hestia; she is rarely personified, no statues or temples remain, yet at times in the archaic period she was the most honored goddess, worshipped at the center of the city and the center

of the Greek household. By the classical period Hestia was not included as one of the twelve Olympians having been replaced by Dionysus. Hestia and her brother Hades are the only two siblings who remain detached from the Olympian family dramas and feuds. Unlike their brothers, Poseidon and Zeus, or their sisters, Hera and Demeter, they are not identified with their family of origin or their siblings. Their places are internal, interior and introverted. Few images or alters survive as reminders of their worship or importance in cult. There were virtually no temples erected to them and they were seldom represented in art, sculpture or vase painting. Neither were they parents to heroes like their siblings. As gods of place both Hestia and Hades have been re-placed and dis-placed which are potent clues as to what we culturally and psychologically have done with these archetypal energies. In a modern context this place of Hestia, as a metaphor for the hearth of inner life, has become dis-placed, re-placed by the rush and busyness of the outer world. When the inner life is sidelined and banished to the fringes of society, anxiety, terror and panic can no longer be constrained in the community. Hestia reflects the need for solace, quiet and retreat into the inner sanctuary of the Self.

As an image of center, Hestia is not personified or remembered by statues or temples but manifests through the sense of peace. She is the central point; the meeting place the fires of the home, the hearth, the Omphalos as the symbol for the center of the Earth. In antiquity her sanctuaries were non-warring zones, places of political peace. Plato remarked, *'when the Gods warred, only Hestia did not take part'* that characterized the goddess' propensity to non-involvement. In the earlier myths of Hestia she resisted the advances of both her brother Poseidon and her nephew Apollo and was honored with remaining eternally virginal, symbolic of her attachment to the inner life. She is the aspect of self, which can never be violated or abused and always able to access the soul. Hestia is central to psychic life and expressions like 'can't settle down', 'off center', 'being off base' remind us of being out of touch with Hestia. As the hearth she is a guide to the inner life and the central image around which soulful images can constellate. She represents sacred space, the meditative moment the soul of place and the feeling of home.

In astrology Vesta is the inner instinct that honors soul by giving it a sacred place, an altar, a quiet moment. She represents hospice and offers hospitality to the aspects of self that feel displaced and dislocated. As the hearth light she offers stillness, quietude, meditation and solitude in the midst of the everyday. The inner life is the container for anxiety and despair as well as a refuge from the pollution of daily life. Below are descriptions of where Vesta is to be found in your horoscope, the spheres where she seeks to be honored in your life.

Vesta is in the 7th House

All of the stories and poems that are written about divine love fire your imagination because you are seeking your own sacred fire through love with another person. If you are really fortunate then you find this love, forming a lasting bond with a loving and supportive spouse, someone who helps you discover and express your own unique gifts. In other words you have the ability to experience the love that others dream about. As author Amy Bloom said: *'Love at first sight is easy to understand; it's when two people have been looking at each other for a lifetime that it becomes a miracle.'*

However, you may lose your sense of self if you devote yourself into the service of the other and not the goddess. In your efforts to find the perfect love you may lose sight of your own gifts, sacrificing too many of your own interests in an effort to maintain your marriage. Circumstances may force you to rely on your own resources, although this may not be a comfortable situation. In some cases this placement of the goddess Vesta can indicate that you are not willing to sacrifice your own independence for marriage because you are concerned that too many of your own individual gifts could be lost in partnership. You may fear that you will lose more than you will gain.

Forming a deep and meaningful marriage may be your focus in life, but you also need to focus on partnerships in general. Your collaborative work with others can bring many rewards. Counseling, teaching or working in diplomatic circles may bring good fortune for you and those who work with you.

Vesta is in Aries

When you are motivated you are a highly charged individual, capable of remaining focused on your goal, inspiring others through your independent spirit and becoming a leader in your field. Therefore it is imperative that you discover your true purpose and pursue your own journey. Early in your life you need to start asking questions such as: 'What am I passionate about?' 'What talent do I take for granted?' 'What would I be motivated to achieve whether or not it offered monetary rewards?' It is vital that you pursue your own ambitions and not those of your parents, friends or lovers.

When you are engaged in activities that truly fire your enthusiasm then you are able to reap the rewards of emotional and spiritual satisfaction. Only the brave or the foolish would stand in your way. In fact you need to attract friends, colleagues and lovers who understand your need for independence and freedom. Otherwise fiery conflict could result. The goddess Vesta in this sign is urging you to contribute your unique gifts to the world, inspiring rather than alienating those around you. Other people are highly likely to help you achieve your purpose. You need to learn to respect and appreciate the contributions of others, no matter how strongly you feel that your unique gifts are the driving force behind any project or relationship. You need to also consider the vital contribution that others are making when they help you achieve your goals.

As English poet John Donne says: *'No man is an island, entire of itself; every man is a piece of the Continent, a part of the main.'* If you can recognize this then you are truly able to fulfill your purpose.

Hygieia - The Soul Of Health



'Health, greatest of all the blessed gods, may I live with you for the rest of my life'
Hymn to Hygieia, Ariphron

In the ancient Greek sanctuaries of healing statues of Hygieia, the goddess of health, reminded the pilgrim of the archetypal quest for wholeness and well being. Adorned with a simple garment Hygieia was often represented as youthful, radiant and smiling, attributes that are companions of health. Either she is holding or feeding a snake. Carrying a bowl of food or water Hygieia is generally represented tending the sacred snakes that were housed in the temples on the sanctuaries of healing. Sometimes she is presented holding a wreath of laurel, combining victory with health, or other plants known for their medicinal properties, a motif that links her to an ancient tradition of woman healers, herbalists and midwives.

Hygieia's intimate relationship with the serpent recalls her link to the ancient goddesses of healing and nature. Earth and Mother goddesses were accompanied by serpents and the ancient belief was that they transmitted the power of healing and prophecy. As a symbol of both regeneration and divination serpents were sacred to the goddess who gave them sanctuary in the bosom of the earth. Later the cult of sacred snake was adapted and serpents were included in the rituals at the sanctuaries that offered healing and spiritual guidance. The ancients also saw the sacred serpent dwelling in the body and when awakened it could offer illumination, vitality and the radiance of well being. As nature became less mysterious snakes became demonized, no longer transmitting the ancient wisdom of healing but transporting demonic and darker forces.

Hygieia nurtures and tends the snake revering its sacred power to rejuvenate and shed its old ways. She celebrates its dark, earthy force and recognizes the divine mystery of illness and health. Like her ancient ancestors, Hygieia honored the union between the natural and supernatural worlds knowing that health and well being depended on bringing them both into a cohesive whole. Goddess wisdom also knew that all of nature was animated by spirits that could be petitioned through magical and religious ritual in an attempt to restore equilibrium and well being. Hygieia is the modern surrogate of the ancient goddesses who honor the great mystery of healing.

To the Greeks Hygieia personified health, that mysterious amalgam of well being, wholeness and happiness. She emerged in the classical period when the cult of Asclepius became widespread and flourished throughout the Graeco-Roman world. Hygieia was mainly represented as the daughter of Asclepius, the Greek god of healing, although sometimes known as his wife. Her numerous statues equal those of Asclepius and in the cult of healing she was revered and equal to the god himself. Interestingly the

popularity of temple medicine practiced at the sanctuaries of Asclepius paralleled the growth of rational medicine that had emerged through the teachings of Hippocrates. Hygieia stands at the crossroads of magico-religious healing rituals and contemporary medical practice, holding the tension between the two but allowing each to co-exist. She embraces wholistic healing in every manifestation as she is dedicated to the pursuit of health.

In the ancient community disease was portrayed as a possession by a demon, the intrusion of a spirit or the curse of a god. In the cult of Asclepius illness was seen to be more the call of the divine, the voice that echoed the split between body and spirit. It was the illness that called the pilgrim to the temple to restore equilibrium and well being. At the temple the patient would prepare for an encounter with the god often by fasting, bathing or meditating. Then the patient was escorted into the temple where they would lie down and fall into a deep sleep wherein the god would appear to them in a dream. Once contact with the god had been made through the inner process of the dream the patient would be restored to health. In the healing sanctuaries of Hygieia health was evoked through contact with the divine in the inner sanctuary of the soul. Yet synchronous with these practices were medical doctors who suggested that disease was a natural occurrence and not of the god's making. Hence Hygieia eventually became associated with mental health and well being as rational medical doctors gained a stronghold on the health of the physical body.

When Hygieia is strong in a birth chart we are reminded that health is the alignment of body and soul, heart and mind, outer success and inner peace. One at the expense of the other constellates dis-ease in the temperament that may manifest as a physical symptom, mental anguish or emotional pain. Hygieia is the personification of Health who calls us into the inner sanctuary of the soul to restore health and regain equilibrium. On a divinatory level Hygieia will be chosen when the healing of a situation is imperative. Rational healing is not the only answer. It must be accompanied by attending to the root cause, which ultimately is the illness in the soul. In a psychological sense Hygieia is soul of health, the urge to attend to psyche and its needs by nurturing our deeper urges and impulses. Feeding the snakes is a metaphor for nurturing the dark and mysterious aspects of the soul and attending to the unconscious.

In astrology Hygieia represents health that is forged through the alliance of the natural with the supernatural, the right brain with the left, the inner world with the outer, the serpent with the soul. Hygieia reminds us that health is an archetypal image embedded in the psyche. When the soul is not nourished or attended it speaks through illness and disease. The placement of Hygieia by house and sign that follow are where the goddess seeks her expression in your life.

Hygieia is in the 6th House

The 6th house, where your Hygieia is placed at birth, is the sphere of the chart that naturally focuses on the need to achieve balance in the chaos of an everyday life. Therefore the goddess of health in your horoscope reflects the necessity to attend more consciously to the everyday rituals of well being or else stress will develop. Stress levels are regulated through a health regimen that allows you to take the time to feel serene and focused. With Hygieia in the 6th house it is important to address the question 'what do I need to do on a regular basis to create a sense of well being?'

You may already have to focus on your diet or health due to an allergy, physical ailment or frailty either in your self or someone in your household. However, it is this very sensitivity that has given you an appreciation of the need for a healthy lifestyle and the urge to feel at peace. Ironically it may have been a disease that has called you to a healthy balance in your life. Whether this is the case or not Hygieia stresses the importance of healthcare in the schedule of everyday life.

While work and service are key motifs for this sphere, the work and service of the sixth house is directed to the maintenance of our well being, which is strengthened through the process of self-reflection. Therefore it is imperative to honor the daily need for contemplation, refection and stillness and incorporate this into the rituals of your everyday life. It is imperative to find the time and space to settle and be quiet or else health becomes the focus. You have an instinct for what is necessary to be well. Inherently you know what foods

are best, what vitamins and supplements may be necessary; diet, hygiene, holistic healing modalities are all familiar to you at a deep level. Therefore it is important to honor this innate knowledge and provide an access to it in your everyday life. The goddess invites you to be more conscious of the daily rituals of your life that provide you with a greater sense of wholeness.

Hygieia is in Pisces

Hygieia's innate urge for health and well being expresses itself through the quality of the sign Pisces which suggest the necessity to take care of the soul. In practical terms this suggests that the realm of imagination and creativity are imperative to feeling whole. Without the conscious participation in the sacred, the creative or the magical, you feel unfulfilled and yearn for what is missing. The goddess in this sign produces a healing balm through engaging with the imaginative world of feeling imagery. Therefore one of the routes to well being is through your own personal journey into self understanding following one of many avenues, whether that be the reflection on your dreams, the study of mythology or magic, or in the reverie of being immersed in a creative pursuit.

Whatever, it is important that you engage with the process of immersion into the waters of the unconscious in a way that best suits you. In mythological history Hygieia appeared when the healing cult of Asclepius began to spread across the ancient world. Here in these healing sanctuaries the goddess was petitioned for her therapeutic qualities and one of the ways this occurred was through the power of the dream. As the patient lay in the temple, the healing god would appear in one of his many guises to soothe and heal the ailment. In our contemporary world the dream symbolizes contact with the unconscious. But in order to facilitate this process in our busy lives we need to allow time and space for this to take place. Through the path of focusing on the internal world, rest, relaxation, retreat and involvement with the sacred, Hygieia makes health and well being possible. Therefore it is important that you appeal to the goddess through apportioning enough time from the busyness of your life for retreat.

You also have a healing gift being receptive and intuitively aware of other's pain and anguish. However, part of your own healing journey may be in creating strong enough boundaries between yourself and others to know more clearly when it is time to apply this gift or not. You may have been wounded by an enmeshed family that forced the sacrifice of the self, or through being involved with others in co-addictive or co-dependant relationships. But it is through this experience that you contacted and rescued your own healing abilities. Now the goddess confirms your healing potential, but also affirms your right to choose when to use your healing talents.

Ariadne - The Labyrinth Of The Soul



'To be always fortunate, and to pass through life with a soul that has never known sorrow, is to be ignorant of one half of nature.'

Seneca

Daughter of the great dynasty of Knossos, Ariadne's fate was overshadowed by the curse that plagued her family. In the guise of a great white bull, Zeus had abducted her grandmother Europa from Phoenicia and brought her to Crete. Her mother Pasiphaë had also become enamored by a great bull. Ariadne participated in the family fate: as Pasiphaë's daughter her lifeblood was impassioned and as Europa's granddaughter her destiny was to abandon her ancestral home.

Poseidon cursed Ariadne's family when her father Minos refused to sacrifice his most magnificent bull to the god. Spurned, the god aroused Pasiphaë's shameful lust for the impressive bull that became embodied in her bull-son, the Minotaur, human from the shoulders down. Banished into the labyrinthine blackness below the palace Ariadne's half-brother, the Minotaur, fed on sacrificial children sent from Athens every nine years. Heroic Theseus was one of fourteen youths sent to Crete to face death at the hands of the Minotaur.

When Theseus arrived to participate in the bull games Ariadne's passions were ignited when she saw him for the first time. Beguiled by the handsome hero, Ariadne devised a plan for Theseus to slay the Minotaur and return safely through the dark tunnels of the labyrinth. For her complicity Theseus promised he would marry her and take her away to Athens. Unconscious that her fate was enmeshed with the god Dionysus and not Theseus Ariadne set upon her course to help her lover and in turn betray her family.

Through the dark labyrinthine tunnels Theseus crawled, quietly, mindful not to make sounds that would waken the sleeping Minotaur. Wrapped around his wrist was a ball of yarn, tied to the pillar at the entrance of the maze, which unravelled as he made his way through the dangerous tunnels. Ariadne's thread was the umbilical cord that connected him to the outer world and guaranteed his return after he killed the Minotaur. That evening Ariadne escaped with Theseus. In the dark Mediterranean night they set sail for a victorious return to Athens. Leaving behind her father and sacrificing her brother she surrendered to the passion that burned inside, the rapture only Aphrodite could inspire, a similar fervor that had inflamed her mother and grandmother. The next night Ariadne and her lover reached the island Naxos. Exhausted by traveling and fatigued from the emotional turmoil that had preceded their escape they collapsed into a deep sleep. But as the rays of the morning sun lit her face Ariadne awoke to discover her lover had vanished. At the edge of the shore she saw the sails of his ship in the distance. Athena had carefully woken Theseus before dawn, setting him on his course home without Ariadne. Abandoned, betrayed and used, Ariadne descended into

her own complex world on the shores of Naxos.

Blinded by her passions Ariadne had been complicit in her abandonment. In betraying her family to follow her hero she had set the cycle of betrayal in motion. Projecting her heroic self onto Theseus had left her separated from her own center. Alone Ariadne was forced to connect with her internal world. At this threshold Ariadne experienced an epiphany of Aphrodite the goddess who ignited the passionate fires that led to her suffering. Appearing to Ariadne the goddess revealed her true fate: she would wed her real soul mate, the divine Dionysus. Dionysus celebrated their sacred marriage by offering Ariadne the crown as the symbol of their intimacy and eternal union.

Ariadne's myth portrays the heart's painful journey when connection to the inner self is severed and sacrificed to the lover. Ariadne followed her lover's course rather than her own internal labyrinthine journey, losing her genuine direction. Using the thread, the symbolic connection to her inner core, to serve the hero Ariadne lost contact with her own inner wisdom. Abandoned she was no longer able to define herself exclusively through a partner; therefore a more authentic sense of self could emerge. The painful process of confronting her naïve trust and blind faith in Theseus enabled her renewal and redemption. In psychological terms a more divine sense of union is possible when projections onto the other are consciously relinquished. Dionysus embodies a woman's masculine spirit enabling her to define herself in terms of her own needs and not through someone else.

When Ariadne is prominent in the birth chart she reveals the course of the heart encouraging the individual to acknowledge that the threads to their inner self are tenuous and must be honored in relationship. Ariadne celebrates a more intimate connection with the heart, whether that is through a personal relationship, a new creative endeavor or a new course of life.

In astrology Ariadne represents abandonment as an archetypal process that strips away the mind's illusions in order to hear the calling of the true self. Confronted by the painful reality of being left the individual is forced to relinquish their hopes and fantasies in order to awaken to the authentic path of the heart. Ariadne embodies the soul in relationship that must first experience the painful course of the labyrinth before a divine connection can be realized. Following is the astrological thread that Ariadne weaves through her house and sign in your horoscope.

Ariadne is in the 9th House

You journey far from the origins of your birth in pursuit of meaning in your life. This could mean that you travel to the shores of foreign lands, seeking cultural meaning or that you live your life based on a very different philosophy to that of your childhood family. Perhaps you go so far as to reject the religion of your upbringing. You may marry someone from a different culture, adopting his or her religious beliefs and losing your own cultural identity. Your pursuit of meaning is a valid one; however, you run the risk of losing all meaning if you reject your own creed. You need to listen to your heart in order to gather the grains of truth. Famous author D H Lawrence states, 'it is a fine thing to establish one's own religion in one's heart, not to be dependent on tradition and second-hand ideals. Life will seem to you, later, not a lesser, but a greater thing.'

Your challenge is to pursue your passion for meaning without losing your own identity. Travel, academic study and teaching, prayer, meditation, mythology and other uplifting pursuits are likely to help you stay connected to a sense of purpose, therefore bringing peace.

Your call to wake up to a greater understanding of life may be first heard through the pain of a broken heart. Ironically in following the call to adventure you leave the pain behind, often finding your soul mate and your vocation far from your place of origin. Therefore you have a story to tell, a book to write or a lecture to give on the mysterious forces that lead us to our destiny.

Ariadne is in Gemini

Ariadne asks us to connect to our hearts, not through our connection with other people but through contemplation of our own spiritual source. She asks that we find the still, small voice within - the intuition that guides us and enables us to connect with the feminine and spiritual values in this world. This is particularly challenging when Ariadne is in Gemini because this sign represents all of the distractions offered by society - money, social gatherings, computer chat groups, telephone conversations to name a few. Your thoughts are often preoccupied with intellectual pursuits, busy schedules, a quest for information and other distractions. Your activities can be an obstacle to achieving the peace.

You may be so busy acquiring wealth or knowledge that you lose sight of the more meaningful aspects of life. You may also then have difficulty listening to your own heart. Others may be distracting you from your true purpose. It is not their fault. You are the one who is approaching life like tumbleweed, being blown from place to place at the whim of the elements. You need to become like a tree growing healthy roots with your own values and direction. Learn to trust your own instincts, rather than rely on the advice of others. As Sophocles once said, 'the keenest sorrow is to recognize ourselves as the sole cause of all our adversities'. You need to face the truth and learn to say 'no' to anything other than your true purpose. Once you have your eye firmly trained on your goal then you possess the agility and flexibility to achieve your goal. Your path in life may not be a straight line but you can achieve your heart's desire through strategy and adaptability.

One of your life's distractions is likely to be a love affair with someone unsuitable, perhaps even duplicitous. You may even become involved in a love triangle. On the other hand you may become caught up in a complicated maze of interactions with siblings, friend or colleagues. For a while you feel entangled in tricky affairs. Your heart says one thing but your mind says another. Eventually you emerge feeling lost and confused. You need a new direction. Once again your lesson is to shift your focus from the myriad of distractions to your own inner voice. Meditation and prayer may help to quiet the endless chatter in your mind.

Europa - The Soul Of The Earth



*'On a beach in Sidon a bull was aping a lover's coo. It was Zeus.
He shuddered, the way he did when a gadfly got him.
But this time it was a sweet shuddering.
Eros was lifting a girl onto his back: Europa'
The Marriage of Cadmus and Harmony, Robert Calasso*

Underneath the Cretan palace of Knossos hidden in a labyrinthine chamber lived a bull-man, the Minotaur, the shameful shadow of the Minoan clan. Two generations earlier the story began when Zeus shape-shifted into a beautiful white bull to seduce a young Phoenician princess named Europa. Like the gods of the old religion Zeus took the shape of a virile and magnificent bull to mesmerize the innocent girl who was unaware that her destiny would instigate the founding of two great dynasties as well as the continent named for the virgin Zeus had abducted.

Europa had been playing in a field gathering spring flowers to make garlands when she became enthralled by a large charismatic bull that meandered into the meadow. Possessed with desire to know the bull, she moved closer. Zeus, the bull-god, knelt before her gently beckoning Europa onto his back. She dared to climb upon him, and then slowly he took her step-by-step across the meadow towards the sea. With the power of a great god, the bull strode the waves across the sea to Crete. Europa clung tightly to the powerful bull, as she rode farther and farther away from her homeland. Zeus had made his conquest. He took Europa as his lover, fathering three children by her; one was Minos the founder of the Cretan dynasty.

Europa's father summoned his sons and instructed them to search for their sister and not to return home until the task had been accomplished. Cadmus set out on the quest, eventually journeying to Delphi to ask the oracle where he could find his sister. The oracle advised Cadmus to relinquish the quest for his sister, as his fate was to found the city of Thebes, not find his sister. In order to find the location of Thebes, he must follow a cow until it came to a place where it would lay down due to exhaustion. Europa had been abducted by a god disguised as a bull; her brother Cadmus is led by a cow to his destiny. Both siblings' destiny is to found a great dynasty guided by the commanding and enterprising bovine instinct. Like the zodiacal sign of Taurus the bull symbolizes inherent resource and power and the ability to either cultivate land or build structures that create wealth.

Europa's son Minos claimed the throne of Crete with the blessing of the god Poseidon, his great grandfather who offered him a gift from the sea. A sacred white bull majestically arose out of the ocean and Minos promised to return it to the god in sacrifice. However, the bull was so regal and powerful, Minos decided not

to sacrifice the majestic bull but substitute it for a prized white bull from his own herd. Outraged at the deceit, the earth-shaker Poseidon cursed the Minoan dynasty provoking Pasiphaë, Minos' wife, to be sexually obsessed with the beautiful god-like bull. Her craving led to her becoming pregnant with her monstrous son, the Minotaur. Minos' greed and failure to respect the laws of the gods produced a monster that had to be buried beneath the surface of the family in the labyrinthine dungeons of the palace. Buried shame or repression lurking under the atmosphere of the family home eventually surfaces through the next generations. This became evident through the fate of Europa's granddaughters daughters Ariadne and Phaedra. The myth the Greeks retold was a variant of a much earlier motif when the bull was consort of the earth goddess. Europa is the ancient goddess whose earthy instinct is powerful and resourceful. Europa heralds contact with the ancient feminine instincts that generate the power to create abundance.

Throughout the myth of Europa the bull image reoccurs. It is a multi-dimensional symbol of earthy passions, desires, magnetism, wealth and potency whose shadow is greed and lust. The Great Bull of Heaven was an image of archaic power, fertility and enterprise. The appearance of the heavenly bull of Taurus heralded spring when the bountiful Earth became carpeted with wildflowers and the cycle of courtship began. The great bull is engaging and charismatic constellating the generative power of the feminine. Aphrodite who symbolizes the beauty, sensuality and attractiveness of this archetype is the persuasive erotic power that draws Europa, Pasiphaë, Ariadne and Phaedra into her domain. Europa embodies the wealth and majesty of the bull, its earthy passions and its worldly triumphs.

Europa, as the bull-goddess, reclaims the power to construct and direct the course of her own life. When she is prominent in a birth chart it suggests the individual's present course is to construct a solid foundation that will secure the rapid growth of resources.

In astrology Europa embodies the ability to ride the bull, harness its power and give birth to its resourceful creativity. Innately she is the image of feminine power, guidance and direction. Embodying earthy instincts she knows how to cultivate the earth and create abundance through her passionate, attractive and commanding nature. How she finds expression in your life is explored through the goddess Europa's placement in your horoscope, as follows.

Europa is in the 3rd House

Your resources are linked to your power of understanding and communicating. You are inspired by all the feminine arts. Your intuition is highly tuned and you feel a strong link to the earth. This may manifest in your daily life, hobbies, career or relationships with loved ones. You have a keen and enquiring mind with the ability to retain all sorts of knowledge, but only if it touches your heart. Facts and figures do not hold the same power as meaningful insights and the mystical.

In a woman's chart this placement of the goddess Europa can indicate that intelligent men fascinate you. The men who cross your path influence your own life choices. You may marry a man as a result of a shared passion, but only if he is your equal. You are a feminist in the true sense, a woman who is well aware of her own feminine power and with the ability to rely on your own resources no matter what or who influences you. You have a high respect for other women and your career choice may reflect this.

In man's chart this placement of Europa represents an unorthodox way of thinking. You are likely to explore interests that question the status quo. You may enlist the help of a powerful woman and forge a powerful union to accomplish something together.

You have a love of language, perhaps learning different modern or ancient languages. You are also well aware of the power of silence. As a Spanish Proverb states, 'don't speak unless you can improve on the silence.' Diplomacy comes natural to you, because you are not afraid of silence or of conflict. You are able to grasp the bull by its horns, understand the nature of anything that takes your interest and then share your knowledge with others.

Europa is in Sagittarius

You are an enigma. On the one hand you are a freedom-loving individual, someone who others see as independent and adventurous. On the other hand you are well aware of your vulnerability and your need for intimacy. Your fiery nature requires both the fires of inspiration that comes from having the courage of your own convictions as well as the comfort of the hearth.

However, you are likely to spend your youth searching for the right balance between freedom and commitment. As such you are likely to have many friends but think very seriously before venturing into the turbulent waters of marriage. Deep down you are frightened that your lover will transport you to another world, one that is not of your own making. Having the freedom to live according to your own principles is vital. Experience has taught you how easy it is to lose the way when someone else becomes entangled in your life. You may commit to a long-term relationship if traveling together is involved, perhaps living in foreign places of your choice. You enjoy experiencing another culture as long as your marriage contract gives you the freedom to explore. In your youth you may have difficulty making a firm commitment to someone who is not willing to respect your independent nature. On the whole you are more likely to successfully meet and marry someone in the second half of your life unless you are lucky enough to attract a very accommodating spouse.

At heart you are a philosopher, who enjoys studying, teaching and writing as ways of formulating your own values and goals. You are fun loving and loyal, with an uncanny ability to inspire others to follow their passion. For this reason you may have an unsettling affect on the more staid members of your social circle. You tend to forget that not everyone enjoys a challenge as much as you do.

Pandora - A Gift Of Hope



*'Hope sole remain'd within, nor took her flight,
Beneath the vessel's verge conceal'd from light'
Hesiod*

Pandora's story was written eight centuries before Christ in the epoch when gender roles were rigidly defined. Yet the mythic plot echoes timeless motifs, even ones used in contemporary science fiction. In Greek myth Pandora is the first woman, mother of all mortal women, created by the gods to assert their superiority over mankind. Cast as a femme fatale, a 'beautiful evil', she possesses a jar filled with toxins designed to pollute the race of mankind. Alluring, yet dangerous, Pandora represents a vestige of the ancient goddess culture threatening the emergent patriarch. Yet she also transports an indelible gift from the goddess embedded at the bottom of the urn.

Three centuries later her myth was carved on the marble base underpinning the spectacular cult statue of Athena. When designing the Parthenon and its decorations the Athenians chose the myth of Pandora to be the motif at Athena's feet. On the pedestal of the colossal statue suppliants to Athena were reminded of the creation of the first woman and the plagues she brought to bear on humanity, a striking contrast to Athena who brought victory and pride to the Greeks. Like Athena Pandora's birth was unusual. Fashioned out of the earth at the command of Zeus, Pandora was the instrument designed to punish mankind for the unsanctioned possession of fire stolen by Prometheus.

Zeus was furious when Prometheus stole fire from heaven, smuggling it in a fennel stalk and distributing it to mankind. With the theft the distance between man and god narrowed, as fire was the alchemical agent that would refine raw materials and promote the development of mankind. As the human race developed there would be less need for the gods. Zeus' revenge was to send a 'gift' to man that would counterbalance the profit mankind gained from using fire. To date men had lived without evil in a golden age, which now would come to an end through the guile of a beautiful woman.

Zeus instructed the smith-god Hephaestus to fashion a beautiful maiden resembling a goddess out of clay and water. Athena was to teach the phantom how to weave a web, Aphrodite was instructed to make her seductive and Hermes, the trickster-god, was to teach her how to be deceitful. Adorned with beautiful garments from the Charities, Zeus breathed life into Pandora, who was given as a gift to Epimetheus, the brother of Prometheus. In her hands she carried an intricately designed urn, the dowry Zeus had given her. Shut inside it was all the evils, storms and plagues that bring misfortune to mankind. Instructed not to accept any gifts from Zeus, Epimetheus became enchanted by the beautiful Pandora and forgot his brother's warning. Pandora opened the jar and before she could close the lid disease, old age, pain, toil,

death and all the other ills that plague humanity spilled out. When she was finally able to seal the jar nothing remained except Hope, trapped at the bottom. In their benevolence the gods had insured an antidote for suffering. Pandora offers hope when all else has failed.

The myth of Pandora was included in Greek literature synchronous with the time that the myth of Eve appeared in Jewish writings. In both myths Pandora and Eve become the patriarchal scapegoat for all of humanity's troubles aligning feminine power with evil. This mythic misogyny defines the time when masculine values were dominant and feminine values were denigrated, even demonised. Pandora and Eve became the composite projection of evil, blamed for their lack of foresight, chaos and feelings. Underlying the mythic stratagem was a motif from an earlier period when goddess culture was dominant.

In Greek Pandora translates into 'all gifts' and her entry into Greek myth suggested this name because the gods of Olympus each gave her a gift. However, this mythic thread is probably an inversion from earlier goddess culture when Pandora may have referred to the goddess giving gifts. Gift giving became an essential component of Greek culture and this inverted fragment reminds us of the abundant side of the goddess who offers us the cornucopia of plenty. Pandora is born of the earth like Gaia, supplying the gifts of life. And the gift of life she brings that cannot be destroyed is Hope. On a psychological level hope is the mechanism that breathes life into the soul after it has been bruised and deflated.

Pandora emerges at a critical time historically and psychologically. She enters Greek myth when the goddess culture has waned and been rejected and man is no longer in favor with the gods. Psychologically Pandora appears to offer hope in devastating times. She brings a powerful gift that cannot be destroyed by life's ills. Hope is the life force that survives the disaster evoking images of healing and improvement. When Pandora is prominent in a birth chart she confronts us to delve into the deepest part of ourselves to tap the reservoir of faith. Having survived the projections and denigration of the other, Pandora resurrects life once again through the auspices of hope.

In astrology Pandora reminds us that embedded in every disaster is the gift of renewal through the auspices of faith and hope. Illness, destruction, old age and pain are part of feminine wisdom and this knowledge stands in direct contrast to masculine fantasies of a Golden Age and Garden of Eden. How she enters our life is reflected in the placement of the goddess. Descriptions of the goddess by house and sign in your horoscope are next.

Pandora is in the 3rd House

>From the moment you were born you were curious about the world around you. You may have been advanced in your childhood development. If you ask your parents and mentors about yourself as a youngster they are likely to regale you with stories of your early learning abilities, your responsiveness and your ability to chatter non-stop. Your ability to ask questions has never changed. You are quite determined to learn and understand a wide range of subjects. In fact you are a living example of the saying 'curiosity killed the cat'. Your inquisitive nature has always led you into troubled waters. You just can't seem to help asking questions and making certain choices that lead you into unknown territories. As a child you may have provided many memorable adventures for you and your siblings. Your colleagues, friends and relatives may warn you but that doesn't stop you. You make up your own mind and then follow through ever hopeful of a positive outcome.

You enjoy a challenge, particularly one that stretches your intellectual ability. Mazes, puzzles and mystery books all appeal. On a larger scale psychology, psychiatry, choreography, education, policy and language may be attractive. Your intellectual responses are sharpened through lively conversation, thought-provoking discussion and stimulating debates.

The positive side of your insatiable curiosity and determination is that as an adult, you are a born advocate, speaking up on behalf of yourself, your siblings and your neighbors. You ask the difficult questions and demand the answers no matter how much trouble this may cause. You know that the short-term

consequences are likely to be difficult but you are seeking the long-term benefits. Results are what count even if the path to achieving your goals is a little bumpy. This means that you can be an inspirational advocate and public speaker, representing the less powerful members of your community. You also have the ability to be a sympathetic and wise counselor, unafraid of facing the truth no matter how traumatic other people's stories turn out to be. You are ever hopeful of overcoming intellectual hurdles and healing matters of the heart through empathy, sharing stories and offering compassionate understanding. As a result you offer hope to many people in your vicinity.

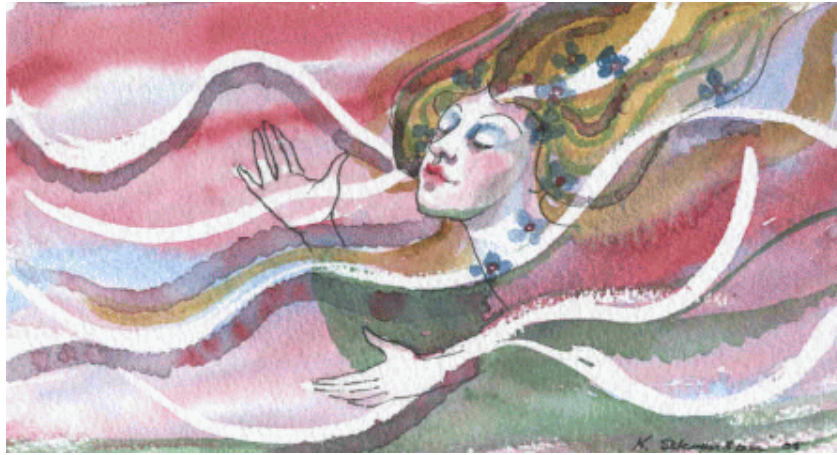
Pandora is in Sagittarius

You are never short of ideas. The curiosity of the goddess Pandora combines well in some ways with the ever-optimistic sign of Sagittarius. You are enthusiastic and full of boundless energy. You are likely to be a leader in your chosen field because your passion for your own ideas translates into action. Like the Sagittarian archer, you shoot arrows in every direction. You are adventurous and have a desire to make a difference, an urge to 'be all one can be.' Your only problem is that you don't know when to stop. Your enthusiasm is wonderful, but you need to slow down from time to time. You have the ability to drive yourself hard, but others may have some trouble keeping up. You can be quite selfish in your pursuits, demanding support from those close to you but failing to offer any sustenance in return. In your own search to find the answers you may have not listened to the needs of those closest to you.

The goddess Pandora did not realize the consequences of her lack of restraint. At some stage during your life you may have to live with the results of unintended consequences from your own actions, perhaps even a lack of appreciation of those who have helped you achieve your goals. As a result you have to undergo a process of change. This could be a change of attitude or a change of circumstances, sometimes both. Life's lessons are learned through experience.

When Pandora was finally able to seal the jar nothing remained except hope, trapped at the bottom. This is your greatest gift to your fellow human beings, your ability to offer hope. You can be a great entertainer, perhaps even a comic, offering humorous insights on all manner of human quirks and achievements. You uplift the human spirit. The great comedian Groucho Marx comes to mind. If you are introverted then your gifts could be more prophetic or poetic. You may work behind the scenes. You may be a brilliant political strategist, counselor, teacher, writer, scientist, or metaphysic. Whatever your chosen field of interest you are able to apply an enquiring mind, an understanding of human nature and compassion for the human condition.

Mnemosyne - The Soul Of Memory



*'Thou fill'st from the wingèd chalice of the soul
Thy lamp, O Memory, fire-wingèd to its goal.
Dante Gabriel Rossetti*

The faculty of memory was so important to the ancients that it was personified as a goddess. In Greek cosmogony Mnemosyne was the daughter of Uranus and Gaia, a pre-Olympian goddess who characterized Memory. Being one of the original deities Mnemosyne is the custodian of memory before the advent of writing, literacy, books, recordings and computers. She embodies the voice of an oral culture that communicates from the soul through stories, pictures, metaphors and body language. Mnemosyne finds her voice through the poetry of images revealing her memoirs through a dream, a feeling, a response, a longing or a sudden thought that darts into consciousness. Embedded in the fragments of a song, a myth, or a fairy tale linger ancient truths that awaken the goddess. Dwelling in the soul Mnemosyne unexpectedly arouses memory through our senses and bodily reactions.

To the ancient Greeks memory was a goddess residing in the heart. Memory was soulful, an aspect of psyche that was creative and evocative and the ancients also saw the goddess as mother of the Muses. Goddess culture honored her form through three phases and originally Mnemosyne was celebrated through the Muses of meditation, memory and song. In early myth the Muses were the triune aspect of memory who inspired poetry and song. As rational science and beliefs began to emerge the seat of memory began to shift to the brain, aligning memory with a more logical and calculating experience rendering Mnemosyne a passive goddess who collected and stored life's impressions. Later myth suggested there were nine muses. Zeus visited Mnemosyne for nine nights and was the father of her nine daughters, the Muses, the inspiration and manifestation of the soul of memory. As mistresses of healing and prophecy the Muses inspired and taught others to contact a deeper knowing through their imagination and creativity which guarded the wellspring of memory. As custodians of the arts each had a sphere of influence which they inspired and animated with ancient images and recollections. History, Music, Comedy, Tragedy, Choral Dance and Song, Lyric Poetry, Religious Dance, Astronomy and Epic Poetry were the personifications of the ancient goddess of memory. Apollo, lord of the rational sphere, became their guardian and leader.

Memory's daughters are the muses, the ones who inspire and enchant the soul. Through her and her daughters we are able to engage in weaving the fragments of memory together to evoke meaning. Mnemosyne reminds us to remember the ancient ways. The goddess of Memory is not just a passive recorder of experience and events but a poetic and heart-rending process that inspires the imagination. Mnemosyne re-collects the emotional experiences, feelings and impressions of our life. She is the archive of all that we have tasted, touched, wanted, smelt and felt. Her memories are stored in the psyche as

images, symbols, feelings, impressions and instincts or become imprinted in the body, in the adrenal or olfactory glands, the tension in the muscles, allergies and illnesses. Mnemosyne is rhythmic and reflective, not linear, evoking dreams, images, songs that give continuity to our life's narrative. Memory and imagination are woven together when Mnemosyne and her daughters are aroused.

To the ancients the sacred sanctuary of Mnemosyne and the Muses was the museum. These ancient shrines dedicated to the goddess ceded to the structures we know today as museums where we house the great works of the imagination. On an inner level the museum is the sphere of Mnemosyne where impressions and feelings from the past are evoked in the present situation.

In astrology Mnemosyne, the goddess, helps us remember images and impressions from previous phases of our life in order to give meaning, context and insight into these experiences. She acts as a loosening agent, allowing buried complexes, taboo feelings, repressed memories to breathe again to find some place in the sunlight of consciousness. She connects passages of time together. Links can be made back to times in the previous cycle allowing space for the process of reflection and musing. Following is a report of how Mnemosyne brings the muse into your life experience.

Mnemosyne is in the 10th House

This is a powerful placement of the goddess Mnemosyne indicating that your mother had played a prominent role in your life, inspiring you to either follow in her footsteps or travel to foreign lands in your search of your life path or influential career. Your mother's story, or the story of her family, has an impact on your own life direction. Mnemosyne was the mother of the nine muses. As a daughter and a mother you are inspired to help others through your vocation.

In a woman's chart this may indicate that you consider that your role as a mother is your most significant contribution to society. However, it can also indicate a career, which takes precedence over motherhood. You aim to contribute something significant to society through your career.

In a man's chart, this placement of the goddess Mnemosyne is likely to indicate that your mother influences your choice of wife and career. Perhaps you want to choose a wife who emulates your mother. Your mother may be your muse, inspirational in her own spiritual or artistic talents. Perhaps you have inherited your mother's spiritual values, musical or poetic talents. Whatever talents or values you learn and retain from your mother's influence, you are likely to respect women and their contribution to society, both in the workforce and in childbearing. Your wife reflects this respect.

You are aware of the multi-dimensions of women, and therefore may find it easier to work with women rather than men. You may also be dedicated to working for women's rights, protecting young children and their mothers. You may also be well aware of the need to take care of Mother Earth, working as a gardener or perhaps for environmental causes. You may also be drawn to a career in the arts, in particular singing, writing or dancing. Your challenge is to remain focused on your purpose in life, rather than seeking rewards and recognition for your work. The goddess Mnemosyne is calling on you to express the very best of feminine intuition, to take care of Mother Earth and to lead others by example.

Mnemosyne is in Cancer

You are the custodian of the family story and the curator of the family museum. This can be indicated in many ways in your life. You may be the person who organizes the social get-togethers, providing the food and warmth for relatives to gather and swap stories. You may be the ongoing link in your family, continuing the family tree with your offspring. On the other hand you may be the keeper of the family records, the family photo album and family heirlooms. Perhaps you are a genealogist, tracing your family history. You have a deep and abiding love of your family, its history, the stories and the many extensions.

You may also enjoy reading family sagas, biographies and other such stories. Your family values extend to society, because you believe that the family is the building block of society. You may not believe in a

traditional family structure, but you do see the links in families of all cultures. You recognize that the global community is linked through love of those nearest and dearest. All people share the common bond of love for their children. There may even be a part of your personality that longs for a Garden of Eden scenario, adults, children and animals all sharing domestic life in a peaceful and harmonious manner.

Depending on other aspects of your birth chart you may enjoy the domestic arts, cooking, cleaning, gardening and home remedies. You may learn these crafts from a family member, probably but not necessarily your mother. Recipes may be passed down through the generations to pop up in your kitchen. Of course, you may enjoy inventing a few recipes of your own, or researching the origins of other people's recipes. Food is likely to play a prominent role in your life, the sharing of food and recipes. You are likely to pass these skills on to your own children, relatives or teach them in schools. You have a warm heart, fond memories of gatherings in your home and an eagerness to impart these values to other people. Deeply embedded in your character is the respect for the traditions and continuity of family life.

Hecate - The Soul In Transition



*'Leave those vain moralists, my friend, and return to the depth of your soul:
that is where you will always rediscover the source of the sacred fire
which so often inflamed us with love of the sublime virtues;
that is where you will see the eternal image of true beauty,
the contemplation of which inspires us with a holy enthusiasm.'*
Anthony Robbins

Hecate became associated with the dark phase of triple goddess who embraced the spheres of heaven (Selene), earth (Artemis) and underworld (Persephone). Her initial association with the underworld was as an attendant to Persephone. It was Hecate who heard Persephone's screams when Hades dragged her down into the netherworld. Hecate was also present when Hermes escorted Persephone out of the underworld. As a guardian of the threshold Hecate witnessed Persephone's descent and release. Her cave is located between the earth and the underworld confirming Hecate's role as an intermediary, bound to neither world but in between both.

As a threshold goddess Hecate is encountered when the paths of our lives converge and we are uncertain which fork in the road to follow. Throughout antiquity she was worshipped at the intersection of roads and by Roman times she was known as Hecate Trivia, the goddess of the three ways. On the night of the New Moon pots of food were left at the crossroads as votive offerings to the goddess. 'Hecate's suppers' honored the transition of one lunar cycle to the next on the night that the old month ended. Statues with three bodies and three heads were erected at crossroads for travelers to leave offerings and say prayers to Hecate for guidance across an important threshold.

At transitional spaces where paths converged travelers would pass from one world into another, therefore crossroads became associated with spirits and shades. Hecate became aligned with ghosts and hallucinations as the ancient Greeks attributed the power to conjure up the dead and the phantoms of the imagination with her. Known as the leader of souls she was associated with magic, divination and contact with the shades of the dead. By the classical period Hecate had become affiliated with witchcraft and magic, known as the goddess of ghosts and night terrors. Her companions were dogs. As guardians of thresholds and instinctually able to trace a scent hounds represented Hecate's instinctual wisdom. By later antiquity Hecate had become the patroness of witchcraft.

Hecate's triple aspect was also reflected in the phases of the Moon. As 'Mistress of the Moon' Hecate governed its dark phase. Sappho called her the 'Queen of the Night' and as a light bearer she often carried two torches. Knowing the wisdom of cycles and their triune phases of birth, death and rebirth the lunar

goddess also represented the menstrual crossroads in a woman's life cycle. As a birth goddess she was an intermediary figure not only for souls departing their body but also for souls entering a new one. Hecate appears at the threshold of change in women's lives as she enters a new phase of the life cycle. As a lunar goddess associated with fertility rites she is aware of the richness of the dark and hidden treasures. In her dual role as guardian of the threshold and Queen of the Night she knows that every decision taken at the crossroads must come from a deeper level of soul.

Since her early depiction in epic Hecate has become denigrated, often portrayed as a negative and a dangerous demon of the dark. Disassociated from the totality of the lunar cycle she has become identified only with its dark phase. Fear of the dark, death and the underworld were projected onto Hecate who represented the dismembered connection to the feminine wisdom of cycles. Her ancient myth reminds us of her perpetual role as an intermediary and attendant at the crossroads. We meet her on the precipice of change, at crossroads, on doorways, in transition. During these times of initiation Hecate helps us to accept our disorientation between two ways of being.

When the goddess Hecate is prominent in a birth chart she depicts the area in which we are at crossroads in our lives. Time can sometimes seem suspended while we reorient ourselves to a new way of being. Confusion, loss and disconnection are natural moods during this phase as we let go of what has been in order to greet what may be. By house position Hecate would suggest where you will encounter her in your life; by sign she colors your life with magic and mystery. Following are the astrological descriptions where Hecate enters your experience.

Hecate is in the 9th House

You are fascinated with the concept of authority. You may not hold a prominent position in society, but you are intrigued by the machinations of power. The Titan goddess Hecate was prominent during the Olympian reign and is said to have played a role in judgments. You, too, may play such a role in your life or perhaps be inspired by other people in prominent positions. The United Nations and its politics may be of particular interest. You are philosophical about society as a whole, able to be pragmatic, but you are also motivated to challenge any perceived abuse of power. Courts, Parliaments and Cathedrals hold you in their awe.

You are equally inspired by the sky with its majestic sunsets, cloud formations and constellations. The night sky, and therefore astronomy, may appeal. However, you are more likely to have your focus on practical global matters. One of your most effective skills is the ability to comprehend and formulate policies. You love farsighted plans. For these reasons you may work in law, politics, engineering or international diplomacy. The goddess Hecate was a wise woman, a sage, a Crone. You are likely to share these traits and perhaps use them as a counselor or healer. You are likely to come across conservative religion at a young age, possibly during your schooling, therefore become either strongly drawn to or repelled by orthodox religion. You may see organized religion as a patriarchal system which oppresses feminine wisdom. You are keen to formulate your own religious or spiritual hypothesis.

Wise Hecate had strong links with the spirit world and you may find it difficult to remain an atheist, if this is your initial inclination. In other words you are likely to reach a religious crossroad, and perhaps experience your own 'Road to Damascus'. In case you are not aware of it, the 'Road to Damascus' is a Biblical reference to the Christian conversion of Saul. According to the Acts of the Apostles, Jesus appeared to Saul on the road from Jerusalem to Damascus. Saul had an instant change of heart and converted to Christianity. At some stage of your life you, too, may experience a conversion in relation to religion, culture or beliefs. You are likely to explore the spiritual world, spiritual laws and the workings of the universe. You may read biographies and autobiographies of famous explorers, or anyone who has achieved prominence in his or her field. You may study ancient wisdom teachings, archaeology, history, anthropology and the classics in a bid to discover your own personal philosophy. You need to find an outlet for your wisdom, one that satisfies your thirst for knowledge as well as your need to inspire the greater good in human society.

Hecate is in Gemini

In Australia parrots are noisy, active and brightly colored birds that glisten in the sunlight with their coats of bright greens, reds and yellows. They chatter loudly as they flit from branch to branch in the treetops and are a wondrous sight when the full rays of the sun catch their coats. They seem to inspire joy, hope and a sense of wonder in the variety of bird and animal life in the natural world. The goddess Hecate offers you a similar disposition in the sign of Gemini.

You have the ability to be a bright, vivacious communicator inspiring others through the sheer force of your personality. No matter what path you choose to take, and you are likely to be tempted by a wide variety, you are an uplifting presence wherever you take flight . You delight in books and maps and are likely to spend many an hour divining the keys, gleanng facts and generally getting familiar with an area via a map. Perhaps this is because you have a lousy sense of direction, or more likely it is because you love the stimulation of having many choices in life. Hecate was the goddess of navigation and the sign of Gemini suggests many directions. Therefore you love the feeling of freedom that comes from exploring new destinations, even if these are just down the road. You are likely to take many journeys during your lifetime. This could simply mean that you travel for your work. However, it could also indicate that you go on a spiritual quest. For this reason mazes and labyrinths are likely to attract your attention, particularly sacred labyrinths. Labyrinths have been around for thousands of years but today they are constructed in many forms and are used for reflection, meditation, and prayer, all of which can be of great benefit for you. The sign of Gemini suggests restlessness. Your powerful message needs to be communicated and you are eager to make sure that as many people as possible are reached. Do you take time out to rest and reflect? Yes, the goddess Hecate is calling on you to teach others about the joys of the freedom of the mind and the many spiritual opportunities that exist. However, she is also urging you to pay attention to your own spiritual gifts. You can inspire as many people as you like, as long as you are fully utilising your capacity as the ruler of the crossroads. Indecision and procrastination are not options, but neither is rash behavior. You need to take considered action, knowing that your choices will help spark ideas and eventually deliver the answers that you seek for both yourself and others.

Cassandra - The Prophetic Soul



'And though I have the gift of prophecy, and understand all mysteries and all knowledge, and though I have all faith, so that I could remove mountains, but have not love, I am nothing.'
1 Corinthians 13:2, Bible

Cassandra stood on the walls of Troy and watched Paris' ship enter the harbor. Her brother had returned from Sparta having seduced Helen away from her homeland to bring her to live in Troy as his wife. With the blessings of Aphrodite Paris and his lover Helen had snuck away from her palace undetected and sailed across the Aegean to Asia Minor. A dark cloud shrouded the ship as it anchored. When Cassandra watched her brother and Helen disembark and approach the city gates she was flooded with images of Troy's destruction, filling her with an ominous and terrible feeling. Possessed by this eerie perception she uttered a warning to the crowd that was gathered at the gates to welcome the couple. From deep inside she divined the future: Helen's entrance into the city would lead to its destruction. Ignoring Cassandra and her prophecy the crowds turned away to welcome the new royal couple into their city. Time and time again her message was rejected and ridiculed. Ten years later a similar scenario would unfold. Cassandra would warn the Trojans not to accept the wooden horse into their city. Once again no one would heed her accurate predictions. The Greeks, angry at Helen's abduction, sacked Troy and left the city in ashes.

Cassandra was one of the daughters of the royal family of Troy, a sister to both Paris and Hector and twinned to her brother, Helenus. When the twins were infants they accompanied their parents to the temple of Apollo to celebrate a festival in honor of the oracular god. During the ritual the twins fell into a deep sleep. Two temple snakes slithered into their basket as they slept and bit them on their ears injecting the gift (or poison) of prophecy into them. From that day both Cassandra and Helenus were known for their prophetic nature.

Having the gift of sight Cassandra entered the temple to serve Apollo being called to her vocation as his Pythia, the voice of the oracular god. However, Apollo fell in love with her and demanded she reciprocate his desire. But Cassandra refused to consummate the relationship preferring to worship the god in spirit, not body. Enraged Apollo found a way to avenge her rejection. Knowing he could not retract the gift of prophecy that he had given her when she was so young he cursed her so no one would ever believe her prophecies. The god begged her for one kiss and Cassandra consented. As she opened her mouth to kiss the god Apollo breathed his curse into her insuring others would no longer value her prophetic vision. He turned his back on her, condemning Cassandra to see the perilous future yet never able to be understood or believed. Cassandra, cursed by the narcissistic god for rejecting him, was later violently assaulted by Ajax upon the altar of Athena when the Greeks were ransacking Troy. After the sack of Troy the leader of the Greek fleet

Agamemnon took her as his slave back to his palace of Mycenae. As she approached the mammoth walled city her images of destruction became more and more intense. Racked by the violent visions she screamed a warning for Agamemnon to not enter the palace foreseeing his brutal murder at the hands of his wife. In her heart she also knew that entering the city with him would result in her own death.

Cassandra personifies the medial woman whose intuitive faculties and understanding of the unconscious patterns are not welcomed in an ordered rational society. She sees what others are too fearful to see and exposes the inevitable patterns that underpin the situation. In an atmosphere of control and denial Cassandra is marginalized and demeaned becoming the projective reflection of the fear of chaos and uncertainty. Disbelief and ignorance render her wisdom impotent. When dark feelings, dread or grief are repressed in the atmosphere Cassandra is the medium of their expression. Her curse is that she is not identified with her feelings leaving her misunderstood and marginalized. Her feelings, identified by others as autonomous ravings, isolate her. Cassandra is able to sense what is taboo and unlive but unable to remain separate from it.

Cassandra represents the archetype of medial knowledge. Unlike the ancient world there are no longer sanctuaries or sacred places to honor her way of knowing. She reflects the need to be aware of our medial skills and intuitive knowledge and seek training to help strengthen the ability to use this skill and not be overwhelmed by it. When Cassandra appears prominently she encourages the individual to find a voice for the medium through understanding the symbols, images, signs and omens of unconscious language. She embodies the ancient ways of knowing in a culture that no longer values prophecy and divination. Her knowledge is not objective but oracular. To embrace Cassandra we must abandon logic, separateness and rationality and enter into the irrational world where meaning is revealed through feeling and connectedness. However, Cassandra reminds us that in a scientific and ordered society our knowing may be rejected. Cassandra encourages us to have the strength of our convictions and a strong and healthy identity about our beliefs.

Oracular knowing springs out of the collective through an unconscious and unbound participation with everything in the environment. When boundaries are blurred and the veil between the worlds is lifted we enter into a participation mystique with the spirits of the world beyond us and may be called to act as a vessel for their message. Cassandra in your horoscope reveals where you are sensitive to the pattern of the goddess. Following are the placements of Cassandra in your horoscope by house and sign.

Cassandra is in the 7th House

As a young child you watch and learn from the interactions of your parents. If they share a positive and loving bond then you are likely to learn that relationships are a gift. As an adult you develop a deeply rewarding bond with a marriage partner, and possibly also business partners. On the other hand if your parent's relationship is fraught with difficulties then you are likely to be more sensitive than usual to the potential undercurrents in marriage unions. As you grow older you may be wary of forging your own commitment to another person, believing that your personal gifts will disappear.

Whether you grow up with loving or feuding parents, you have a wonderful ability to understand the benefits that can come through joining forces with another person. If you choose not to marry, then you are likely to form bonds with other people that help develop your gifts. Perhaps you become involved in creative projects that benefit both yourself and those working closely with you. On the other hand you may work as a marriage guidance counselor, mediator or diplomat.

In a woman's chart this placement of the goddess Cassandra can indicate an intimate bond with a dominant partner. This union needs to be closely monitored. You must be vigilant in making sure that you are not overly influenced by the other in your life. In other words you can form a strong love union, but do not let your marriage partner have control over you and your decisions in a negative manner. Ensure that your spirit is strong in this relationship.

In a man's chart this placement of the goddess Cassandra can depict partnerships with an influential woman, or possibly more than one. This union is likely to bring great personal and/or professional rewards. You need to ensure that you respect the wisdom and choices of your female counterpart in all contracts.

Cassandra is in Pisces

You are a true visionary. Your intuition is a powerful force enabling you to follow your own dreams and to encourage others to seek their true purpose. You are a strong ally and a formidable enemy because powerful subconscious forces influence you. Others make the mistake of underestimating your true worth. Fortunately you have a strong desire to understand the spiritual laws that govern humanity. Therefore you are more likely to concentrate on inspirational and supportive plans rather than destructive ones. Nevertheless your prophetic words may create more confusion than comprehension. The goddess Cassandra was blessed with the ability to foretell the future. You share this ability. Your dreams are particularly prophetic. However, Cassandra was also cursed and her peers, friends and relatives would not listen to her. She was persecuted. You need to choose your friends carefully and ensure that those in authority do not single you out for harassment.

Conservative society, in particular, may misunderstand your gifts. Therefore you are more likely to excel in less orthodox pursuits such as the arts, music, charitable work, environmental and humanitarian causes and spiritual healing. By nature you are mediumistic. As a channel you are able to tap into forces that can be utilized in a positive way as they will bring an enriching quality to whatever you express. This suggests you may have a charismatic voice or vision as you draw on collective forces that are familiar to all.

The goddess Cassandra in the sign of Pisces in a woman's chart indicates a highly intuitive and creative nature. In a man's chart this placement indicates the sensitivity of his inner feminine. Therefore he is likely to attract a vulnerable and responsive woman who he feels he needs to protect. Psychologically he needs to protect his own intuitive skills and learn to develop and use them wisely in his life.

Medea - Herbalist And Healer



'Of all things upon earth that bleed and grow, A herb most bruised is woman'
Euripes, Medea

Medea, a princess of Colchis, was known as the 'wise one' for her skill of healing and proficiency at using drugs and herbs. Colchis, which gives its name to Colchicum, the meadow saffron, was a kingdom on the Eastern shores of the Black Sea, considered a foreign, barbaric land through the eyes of a civilized Greece. Medea's ancestors were linked to both the sun and healing long before Apollo became the god associated with these realms. Helios, Medea's grandfather, was the Sun god of the old order, born a Titan's son. Her aunt Circe was a sorceress, a magician, herbalist and healer who knew the ancient ways of plants and spices and how to cast spells. Circe had trained Medea as a young woman in the arts of sorcery, magic and herbalism, teaching her how to mix potions, direct spells and rearrange matter. Medea was also a priestess in the temple of Hecate, honoring the goddess of the dark night and magic. Hecate guided her instincts. As a medical intuitive she knew the magical properties of herbs, the appropriate plants for healing, homeopathic tinctures and the process of preparing and administering these remedies in her caldron. As the surrogate of Hecate Medea knew the timing of the lunar cycle and how to draw down the moon when ritual and ceremony was needed.

However, Medea was unable to withstand the unholy alliance of the goddesses Hera and Athena who petitioned Aphrodite to conspire with them and cause the princess to fall in love with Jason. Medea became enchanted by Eros and fell in love with the Greek hero, who had come to Colchis to retrieve the Golden Fleece. Medea helped Jason achieve this impossible task with the help of special ointments, incantations and timing. Medea enabled Jason, her heroic/lover, to succeed at the trials set before him but in helping Jason be successful Medea had to betray her family and flee her homeland.

On their flight from Colchis Medea visited her aunt Circe who absolved her of her betrayal and eventually Medea arrived at Jason's birthplace, at the foot of Mount Pelion in Thessaly. When she arrived in her new homeland Medea used her great skill at the arts of magic and herbs to rejuvenate Jason's father but also used her sorcery to trick the king's daughters into unintentionally killing their father. To prepare for this procedure Medea disappeared for nine days collecting the special drugs and herbs that she needed. As the Moon swelled she gave sacrifices to her goddess Hecate, then used drugs to help Aeson, Jason's father, fall into a deep sleep. She then cut his throat to let the old blood run out, dismembered him, putting the pieces in a caldron with the liquid herbs she had prepared. Jason's father emerged from the caldron rejuvenated, forty years younger. Medea's spell captured the daughters of Pelias, the wicked uncle of Jason who had usurped his rightful claim to the throne. The daughters also wished to rejuvenate their father and Medea said she would perform the task again. The daughters prepared their father by dismembering him;

however, this time Medea did not put the herbs in the caldron and their father never emerged.

Having been responsible for the murder of the king Medea and Jason once again were forced to escape. While fleeing Medea's herbal bag broke open, spilling her drugs seeding the plains of Thessaly with an abundance of healing and magical herbs. As the first sorceress to perform rituals in Thessaly Medea is the seminal figure behind the region being known as 'the land of the witches'. Her myth intimates that she introduced woman's herbal knowledge from Asia Minor into Greece.

In later myth Medea is usually remembered, not as the skilled healer, but as a revengeful and spurned partner, a woman caught in the grip of jealousy for which she had no antidote. By the classical period the playwrights depict Medea consumed with rage, murdering her own children to avenge Jason's infidelity. However, Medea is more a reminder of the great respect and knowledge of healing, herbs and magic that was brought to the West and then subtly ignored and eventually demonized. Underpinning the myth are fragments of an older tradition. Jason's name means 'healer' and his partnership with Medea complements the old ways of healing before the emergence of rational medicine and the demonization of magic.

As botany evolved away from gathering herbs and digging roots of the pastoral communities to empirical and detailed research, purification ceremonies and the use of herbs became replaced by manmade drugs and prescriptions. The connections to the more instinctual, earthy and natural ways of healing were left behind. Traces of magic, ritual healing and evoking the spirit of the disease began to disappear in the Western medical tradition. Left to carry the ancient process of magic was Medea, the embodiment of the archetypal witch. As a heroine Medea champions the feminine wisdom that intuitively knows how to cooperate with nature and her cycles. She instinctually knows the right time to perform rituals and ceremonies to evoke the healing spirits or exorcize the demons.

When Medea is prominent in a birth chart she reveals the need to explore the ancient feminine traditions of herbalism, witchcraft and magic ritual. Intuitively we know the natural cycle of the body and what it needs to be well. Medea reminds us to honor the ancient custom of relating to the plant world, the wisdom of nature and the powerful healing and transforming properties embedded in the natural world. Instinctually the witch is the impulse that draws us to remedies and potions at the right time and is the urge to create ritual and ceremony to evoke the powers of the goddess. Following are astrological account of how the force of the goddess may be revealed through your horoscope.

Medea is in the 12th House

While Medea may be comfortable in the watery depths of the 12th house it does not necessarily translate that you will be at ease with this archetypal energy that is so deeply embedded in your psyche. Energetically Medea is not appreciated in our logical scientific world where knowledge needs to be measured and intuitive feelings need to be rationalized. Therefore your deep instincts, feelings, ways of knowing things and ability to see beyond this dimension may be put down and ignored. From an early age you may have been the one identified as being too imaginative or too 'strange'.

Yet interestingly the more those around you denied the more this realm of magic and mystery, the more in touch you became with your inner sense of knowing and seeing. An aspect of your fate includes the uncanny ability you have to know things or sense the future. While this may not be welcomed, even by yourself, it is a pattern that you will recognize and need to learn to accept as you mature. However, you're not alone. In the annals of your family history there will be those who would have had similar abilities and experiences. While they may not have been necessarily integrated or spoken of in your ancestral chronicles, nonetheless, they were part of your tribe. Innocent people became scapegoats in witch hunts and metaphorically speaking this is part of your racial memory. In some sense you're also redeeming this lost and misunderstood aspect of the family fate. Since this pattern in the family may still may be enshrouded or lost in shadow most familial members will still be in denial of this aspect.

While in your early years this may have contributed to you feeling marginal, in later years this will be able to

be more incorporated into your personality. This suggests that you're selected in a way to redeem mystery and magic from the storehouse of the past. You have inherited an intuitive, even mediumistic quality that allows you to communicate with other dimensions and worlds. It is important not to be afraid or dismissive of your feelings, hunches or visions but recognize them as part of a legacy. While your association with this way of knowing will make many feel uncomfortable it will draw those who are in need of comfort and healing to you.

Medea is in Virgo

In your horoscope the goddess Medea is in the sign of Virgo, the sign most commonly associated with many different faces of the goddess through a succession of cultures. As the largest zodiacal constellation the harvest maiden has taken the shape of the Babylonian Ishtar, the Syrian Atargatis, the Egyptian Isis and the Greek Demeter as well as many other potent goddesses, even Hestia, the goddess of the inner hearth. The powerful wisdom that the goddesses protect in this sector of the sky is the feminine knowing of sanctity, containment, productivity and cycles. In your horoscope Medea in this sign draws on this wisdom, enriching your own understanding of what is sacred and what is secular.

In a literal sense you have a natural instinct to know when it is time to harvest in order to benefit from your productivity and hard work. Your psychological intelligence knows when it is time to let go. This suggests that you are good at gathering and creating, contributing to you becoming a creative artisan or craftsperson, which might be expressed in a myriad of ways. Whatever you craft will be useful. Your earthy sensibilities are adept at so many productive rituals whether that is gathering herbs, making clothes, assembling furniture or managing the household. But on a deeper level you are profoundly aware of timing and know when to let go, having analyzed and digested the situation. Virgo's task is to digest and synthesize. In the body digestion is important to consider and Medea's herbs like dill aid the digestion, while flax seed supports the intestines. Remember next time you visit the health food shop to be aware of the foods you buy and how they have been harvested. You have an innate wisdom about the right foods. Chiron, the mentor to Jason and the great medical mentor of the Greek heroes, lends him name to the Bach flower remedy Centaury that supports the sense of self-containment and combats the urge to overdo and overwork. The kitchen pot or wok is a supernatural surrogate for Medea's caldron and therefore a good place to cook up your own magical ingredients! When cooking next time remember Medea as you chop the basil or throw the bay laurel into the stew. Grow some basil in your herb garden and have an endless supply of pesto or just a beautiful smell outside your door. You are able to find the goddess in the simplest of everyday tasks and need to be involved in the domestic rituals no matter how repetitive. It is in the attention to the moment when we honor the goddess. Therefore next time you iron a shirt, feed the cat, dust the coffee table or clean a cupboard be aware that this is a votive for Medea.

In Virgo the goddess earths her powerful abilities in functional and helpful labors. You too will be passionately engaged in what you do, strongly focused on the task and willing to be of service. Therefore you may feel called to serving others through various form of alternate healing or social work. Whatever form this takes you bring your transformational energies in practical ways to the position. No matter what the circumstances, you will need to set aside your own time during the day to find stillness and refuge from the busyness and chaos of an everyday life.

Conclusion

When using this report, please bear in mind that, inevitably, every chart will contain some contradictory influences. Usually it is the responsibility of an astrologer to synthesize these apparent contradictions in order to present a cohesive and meaningful interpretation of the dilemmas of the chart.

Please also be aware of the fact that each person has positive and negative influences in the chart, and therefore in their lives. The challenge is to accept and overcome the negative influences, so that we can successfully focus on the positive traits. This report outlines both influences, and therefore parts may be difficult to accept. Any advice given is meant to be an aid to people taking responsibility for their own lives. The ultimate decision rests with each individual. The authors and publisher accept no liability for any adverse effects of this report.

This report is meant more of an introduction to the wonders of the asteroid goddesses rather than a complete course in its intricacies. Further studies, or a consultation with a professional astrologer, are encouraged to explore this most ancient scientific and philosophic tool. We hope that you will discover a common thread that gently winds its way through the 12 Goddess placements in your chart, a thread that inspires you to continue to follow your dreams and discover the Goddess or God within.

The text in this report has been written by Australian astrologers Brian Clark and Stephanie Johnson.

Brian Clark is one of the main tutors of a four-year program in applied astrology for Astro*Synthesis. He has been active in astrology since 1972, having served as National President for both The Fraternity for Canadian Astrologers and The Federation of Australian Astrologers FAA. He has twice received awards from the Canadian astrological society, received the Education Award from the FAA and been nominated three times for the International Regulus Award. Brian also lectures on myth and conducts tours to sacred sites in Greece through Odyssey. Brian has a BA from Sir George Williams University in Montreal, Canada and a Post Graduate Diploma in Classics and Archaeology from Melbourne University. He is the author of *The Sibling Constellation* (Penguin, 1999) and a contributing author to *Intimate Relationships* (Llewellyn, 1991), books that have also been translated into French and Japanese. A book called *Celestial Tarot* was also published by US Games Systems, Inc.

Stephanie Johnson was a journalist in Australia, England and the USA for 15 years before becoming a professional astrologer. She is currently the sole director of Esoteric Technologies Pty Ltd, and one of the creators of Solar Fire and Astro Gold. Stephanie is based in Melbourne, Australia. It is here that Stephanie writes the Solar Writers, runs Esoteric Technologies and her own international consultation business and astrology report writing service. You can find more information at www.seeingwithstars.net

Kay Steventon is a Melbourne based artist/astrologer. After graduating from R.M.I.T. in 1980 with a Diploma Fine Art, Kay gained the F.A.A. Professional Astrologer qualification, and 'Living The Tarot' Diploma. Since 1966 Kay has had many solo and mixed exhibitions in Melbourne and overseas, specialising in symbolic art in 1992. Her first Tarot deck and book, 'The Spiral Tarot', was published in 1998. Kay 's second Deck, 'Celestial Tarot', was published in 2003 with the Celestial book written by Brian Clark. A 52-card deck, 'Goddesses and Heroines' is due to be published 2005, again a joint effort by Kay and Brian Clark.

If you would like further information please contact Esoteric Technologies Pty Ltd PO Box 159 Seaford Vic 3198 Australia. Phone: 0488 111 078. Email: sales@esotech.com.au Website: www.esotech.com.au

Copyright: Brian Clark and Stephanie Johnson (Seeing With Stars P/L)