

Research and Data From Aspects to Almutens

You can research a plethora of astrological combinations.

The research section of Jigsaw has to be one of the most powerful software research tools on the market.

Firstly researchers can tabulate and graph trends with unprecedented ease, searching large groups of charts for a wide variety of astrological factors.

Whatever the user specifies results in an instantaneous graphic display of results. Bar or polar graphs let you see in a flash whether the effect is worth pursuing, and tables give exact figures. Plus, you can click on any part of a graph or table for an instant chi-square evaluation.

And now you can search for specific criteria within your chart files in the powerful **new Criteria search section**. The list of criteria is seemingly never-ending. To give you an inkling of just some of the possibilities the criteria include planets in signs, houses, decanates, plus essential dignities, altitude, declination, azimuth and more. This new version of Jigsaw even allows you to search for degree and chart almutens! Simply set up your almuten in the **new almuten editor** and add it to your list of criteria.

A new data entry screen for easier use with extra options makes for the professional researchers' dream software. You can add unlimited numeric or textual data fields to each record in a project and this data may be used to select or filter records using Boolean logic. Data files can be of unlimited length!

Here as in all other parts of Jigsaw you can keep a file of notes associated with each project you do. You can also make permanent, high-resolution printouts of all the charts, tables, graphs and diagrams, either for a personal record of research or for articles and research papers.

Includes a free collection of charts and data

- 17 life events for Buzz Aldrin
- 12 life events for Richard Nixon
- 20 life events for Cyril Fagan
- 34 timed astronaut charts
- 43 timed British royal family charts
- 13 timed natal and event charts for the Kennedy family
- 41 timed charts of U.S. presidents
- 21 dated charts of Australian prime ministers
- 55 dated charts of popes
- 399 dated charts of stage and screen stars
- 629 dated charts of published Australian poets
- 1,600 dated charts of popular musicians
- 1,900 records of Adelaide rainfall (1879-1979) categorised according to daily rainfall in millimetres
- 500 records of the world's worst storms 600ce to 1990ce categorised according to type of storm, number

Esoteric Technologies co-wrote Jigsaw with **Bernadette Brady**.

Question: What do ALL 43 Presidents of the USA have in common in their natal charts?
Answer: None of them have their natal Moon in Pisces!

How long did that take to find in Jigsaw – about 30 seconds in the research module.



Computer requirements

PC or compatible computer with Pentium processor (or equivalent)
• CD ROM drive • About 10 MB of disk space for a full installation
• VGA video resolution – XGA or better is recommended • A mouse pointing device • Windows 95, 98, 98SE – 32 MB of RAM minimum – 64 MB of RAM or more recommended • Windows ME, NT4 – 40 MB of RAM minimum – 80 MB of RAM or more recommended • Windows 2000 – 72 MB of RAM minimum – 144 MB of RAM or more recommended • Windows XP – 128 MB of RAM minimum – 256 MB of RAM or more recommended • Windows Vista – 500 MB of RAM minimum – 1 GB of RAM or more recommended .

ESOTERIC
Technologies Pty Ltd

Price

(including GST)
Jigsaw version 2.1
AUD \$495 (US \$350)
plus postage

ESOTERIC
Technologies Pty Ltd

A.C.N. 003 895 396
PO Box 578
Magill SA 5072
Telephone/fax: (08) 8331 3057
Email: sales@esotech.com.au
Website: www.esotech.com.au

Astrology Software for Windows™

Jigsaw version 2.1

Top-grade software for serious students of astrology!

Jigsaw v2.1 is a powerful astrological tool designed to take astrological pieces and put them together to help you see the Big Picture. It is designed to help you to improve your astrological knowledge by finding birth times and researching large and small groups of people and events.

Jigsaw is divided into three sections:

Family Patterns

Rectification

Research

Each section is composed of a distinct and different set of tools created for examining the astrological relationships between people and life. Jigsaw v2.1 is bigger and better than ever.

You can enter data directly into Jigsaw or import charts from Solar Fire, Blue*Star, QuickCharts, or any program in the Nova System. You can also import ASCII text.

"So what's wrong with Jigsaw? Nothing I found."
Ken Gillman

"When used with care and its indications confirmed by other procedures, this new software package is fast proving itself to be an essential part of the rectifier's tool kit."
Considerations, Vol X, No.3

"The more I have used it, the more application I think of for it. Anyone interested in exploring charts and the connections between them would find this program useful."
Graham Bates, AA Journal

Australia's own award-winning software company.
Available on CD.
Technical support only a phone call away.
Sample reports and updates on our website:

www.esotech.com.au

Featuring the new exclusive Group Astro Dynamics report

Never before has this unique report on families and groups been seen in the astrological world.

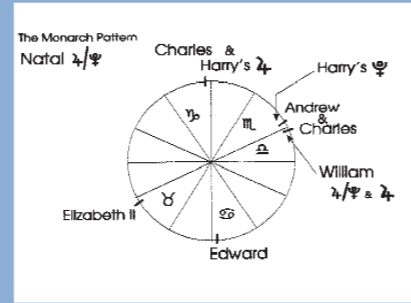
You will be absolutely thrilled with the automated Group Astro Dynamics report in the family patterns section of JigSaw v2.1.

This unique profile report unveils the psychological dynamics in your family or any group. With the help of JigSaw v2.1 you can produce a report of up to 10 pages at the click of a button consisting of: House and sign emphasis in any group of 3 or more people

The prominent harmonic and midpoint patterns complete with an analysis of any vacant points

Interpretations text written by world-renowned astrologer Bernadette Brady revealing the patterns of the group.

This Group Astro Dynamics profile is unique to JigSaw v2.1. The profile report is based on the work of internationally-acclaimed astrologer Bernadette Brady. You will be amazed at what you find out about your groups and how different individuals interlink into the group dynamic.



Family Patterns Searching for patterns in your families and community groups!

Question: What is the most frequent zodiac sign of all the US President's natal points and all their midpoints?
Answer: 233 of the positions of the natal planets and midpoints of the 43 Presidents are located in the sign of Capricorn. How long did that take to find in JigSaw – about 30 seconds in the Family module.

The Family Patterns section also enables you to manually search for patterns within groups of charts.

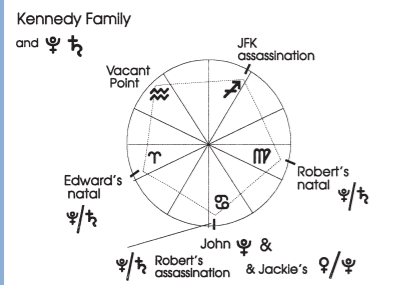
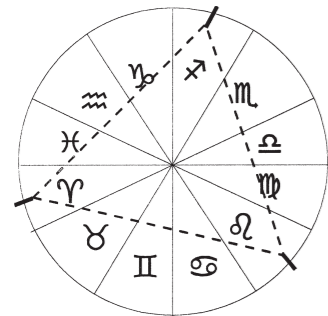
Once you have found your pattern you can click on the delineate button and produce your own profile report with interpretations. This section has to be seen to be believed!

Family Patterns is an exciting way of doing multi-chart synastry. It takes any group of people or events that have something in common, and displays their charts on the screen side by side in linear rather than circular form. This immediately lets you see what degrees are shared by the charts.

You can draw a line through any degree to see what all the charts have on that degree, or highlight any planet or midpoint to see where it falls in each of the charts. You can also instantly change the harmonic of the charts to see the various kinds of inter-aspects or harmonic patterns within the group. Plus, you can view any chart in wheel form.

The program will also search for family patterns, using whatever harmonics, planets, midpoints or degrees you specify. It then quickly displays the patterns it finds in easy-to-read circular diagrams.

You'll be amazed to see how the purpose of the group is shown astrologically, and how the different individuals link into the group Dynamic!



What are the most sensitive points in your chart to transits, progressions or solar arc?

Put your life events into Jigsaw's rectification module and find out in about 10 seconds flat!

Finding unknown birth times has never been this easy!

Rectification

The Rectification section is automated making finding an unknown birth time easier than ever.

Just enter the life events and natal details and, in an instant, you will get a list of suggested birth times ranked in order of the scores that they received when tested against transits, progressions and directions. The automated process is an excellent introduction to rectification, while the manual process has been improved for greater ease of use. This section is now ideal for both the beginner and the advanced astrologer.

Other exciting features in this section include facilities to rectify using secondary and tertiary progressions and solar arc directions. Astrologers can also use more than one graph to combine both Geocentric and Heliocentric coordinate systems in the rectification process.

Another delightful feature is the Dynamic Chart. It is possible to watch all of the planets rotate around a chart. Astrologers will want to spend hours just in this section alone watching transiting, progressing and solar arc directed planets spin around charts highlighting important aspects before their very eyes!

Even if you know the birthtime, the rectification module can tell you much about how a chart responds to transits. It can also help you make minor adjustments to a known birthtime so as to improve accuracy of forecasts.

Tutorials

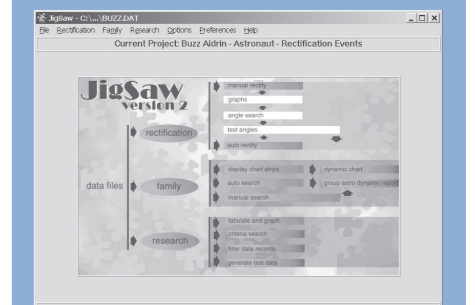
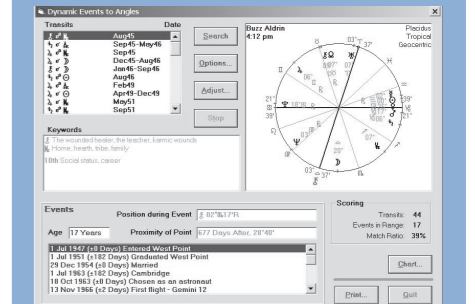
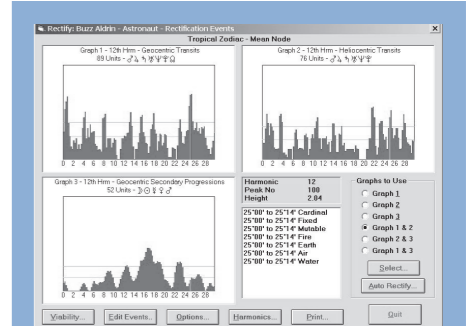
With the click of a mouse button you can access 18 separate tutorials making up more than FIVE HOURS of tutorials.

WORLD RENOWNED ASTROLOGER BERNADETTE BRADY shares her astrological knowledge and technical know-how to help you make the most of your JigSaw v2.1.

JigSaw already has a useful On-line Manual. These tutorials step beyond the manual offering the WORKINGS OF THE PROGRAM as well as the THINKING BEHIND THE METHODS.

The tutorials also include articles by Bernadette Brady on the different sections – Rectification, Family Patterns and Research.

These tutorials are not sold separately but are included in JigSaw v2.1.



Atlas

JigSaw v2.1 contains a Built-in Full ACS Atlas and the latest Swiss Ephemeris files.

